

*Shelburne Historical Society*

1961 THE ARMS STUDENT

ISABELLE HALLER

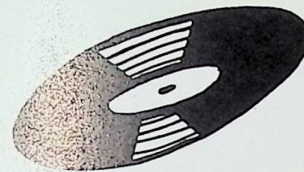
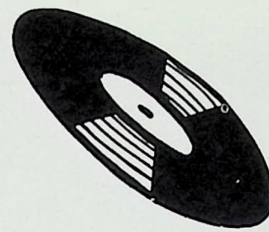


*St. Albans Historical Society*





# *Shelburne Historical Society*



MEMORIES



Are Made Of This...





... As Portrayed In The

ARMS  
STUDENT

# Shelburne Historical Society

SENIOR CLASS PUBLICATION  
ARMS ACADEMY  
33 SEVERANCE STREET  
SHELBURNE FALLS, MASS.



NINETEEN HUNDRED AND SIXTY-ONE



## About Our Book...

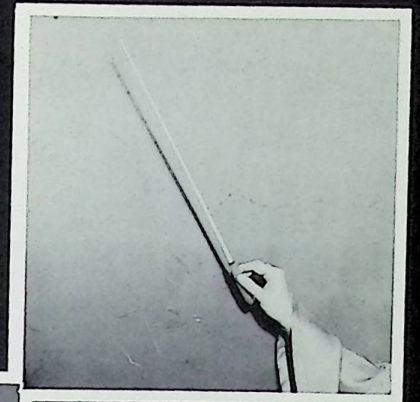
We have attempted to capture for one and all the excitement and anxiety that have been ours to remember and cherish during the past year at Arms Academy. By means of pictures and narrative we hope the reader acquires a glimpse of our school life.

This edition of *The Arms Student* evolves around music--a theme which interests, and ever enchants, many. Just as harmony, rhythm, and words combine to make the pleasing sound of songs, so the student body, the participants in extra-curricular activities, and the faculty unite to make our book a treasured keepsake.

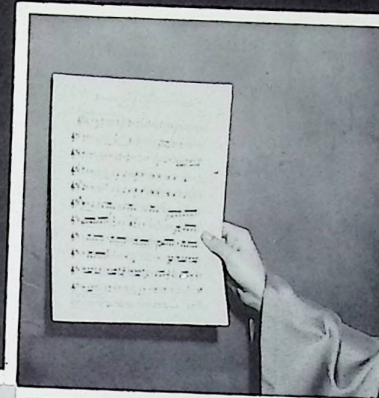


## ...Containing Memories Of

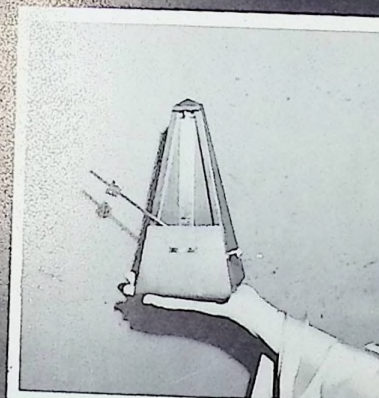
# Shelbourne Historical Society



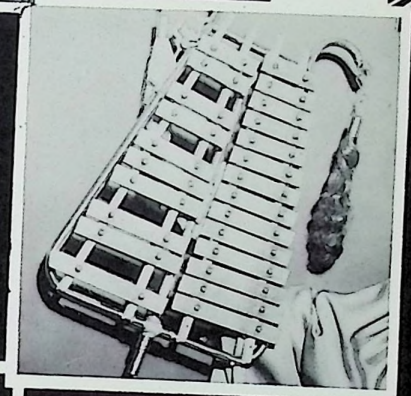
FACULTY



SENIORS



UNDERCLASSMEN



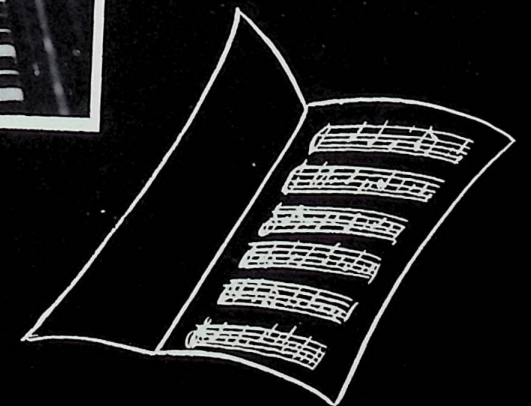
ORGANIZATIONS



ATHLETICS



FEATURES

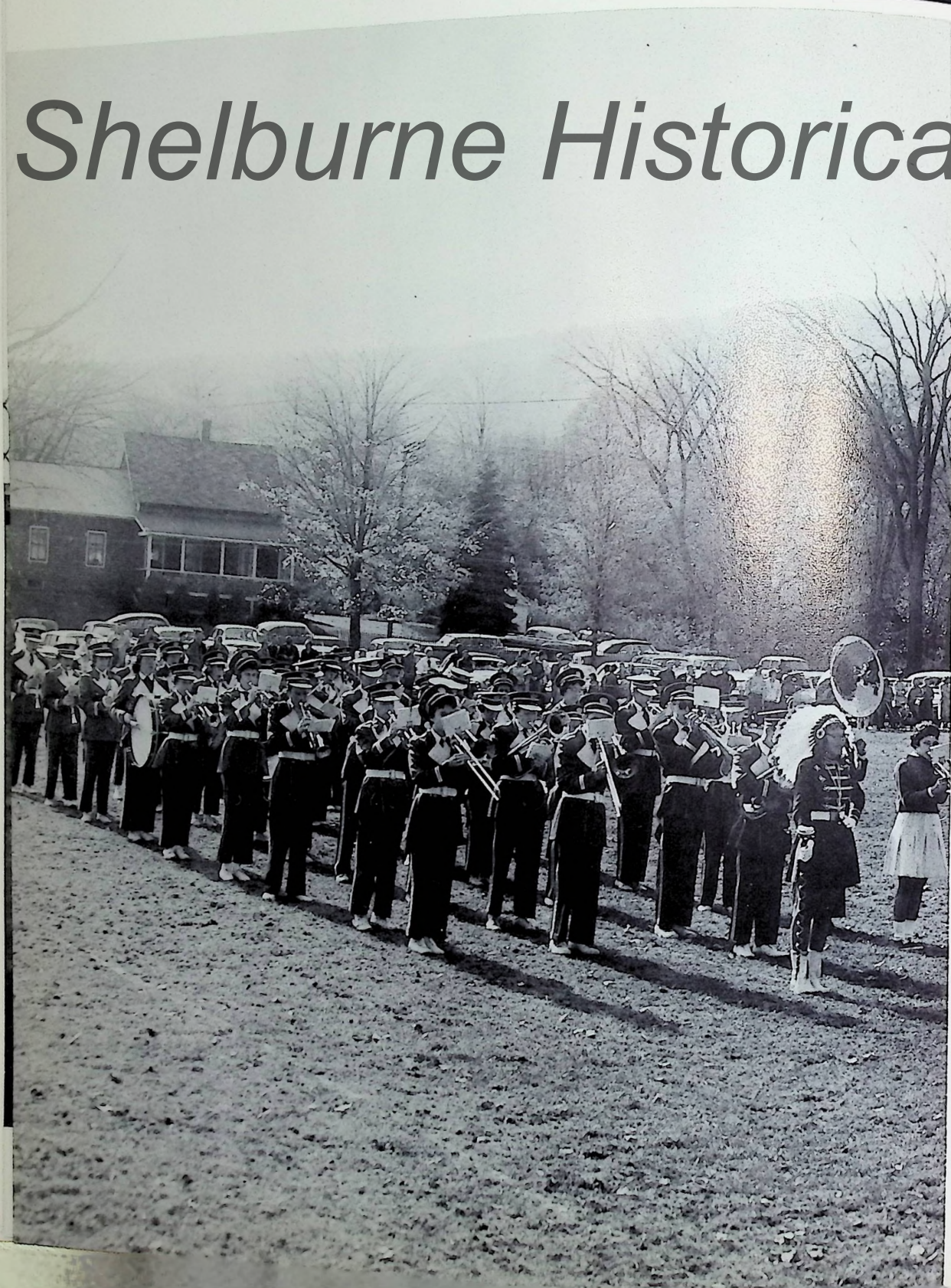




HOW WE *Thrilled*

TO

# Shelburne Historical Society



l. to r. J. Vincent, B. Grogan, J. Carpenter



l. to r. first row: C. DuBuque, N. Johnson, T. Howes, J. Taylor, P. Hoyt, R. Temple, W. Walker; second row: R. Cross, R. Mead, M. Litchfield, M. Goodell.

THE SOUND OF MUSIC



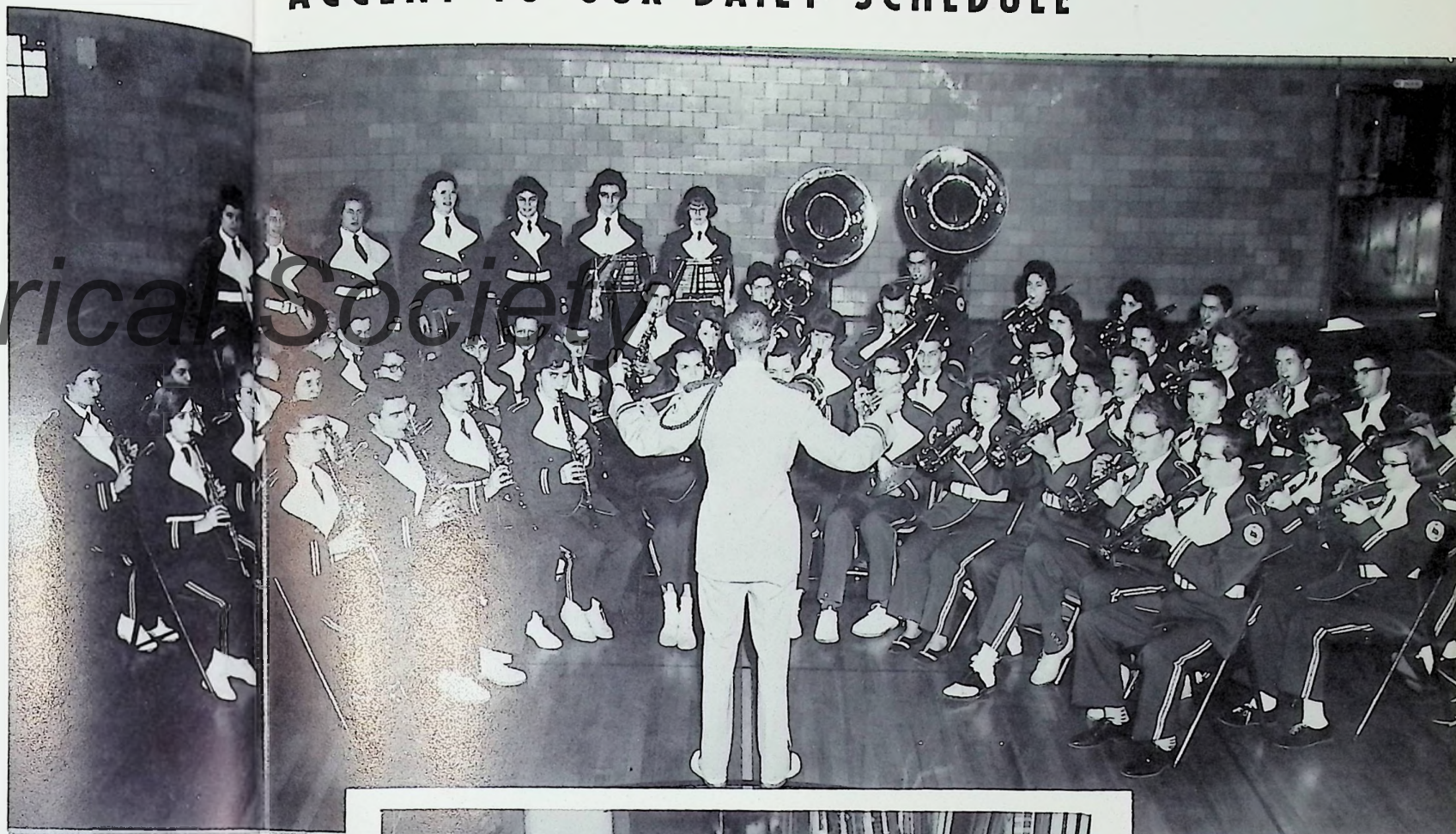
# MUSIC

...AN IMPORTANT

ACCENT TO OUR DAILY SCHEDULE

## Shelburne Historical Society

Left to right: G. Van Guilder, A. Green, Mr. Frude, J. Wright, C. Halberg.



Left to right, first row: B. Desreuisseau, L. Jarvis, C. Gray, S. Bray, C. DuBuque, Mr. Smithers, N. Johnson, T. Howes, J. Taylor, P. Hoyt, R. Temple, W. Walker; second row: J. Call, J. Carpenter, D. Aiken, L. Garland, D. Donelson, P. Patterson, N. O'Brien, P. Purinton, G. Brown, D. Paye, R. Cross, R. Mead, M. Litchfield, M. Goodell; third row: J. Stroheker, S. Garland, G. Streeter, R. Billiel, W. Rosenberg, D. Smithers, J. Wright, H. Field, D. Quinn, J. Temple, M. Allen, F. Goodell, P. Crosier, E. Kelley; fourth row: J. Vincent, B. Grogan, J. Aiken, C. Booker, M. Garland, R. Hopps, M. Upright, A. Shippee, R. Amnott, B. Quinn, A. Chasles, K. Mills.

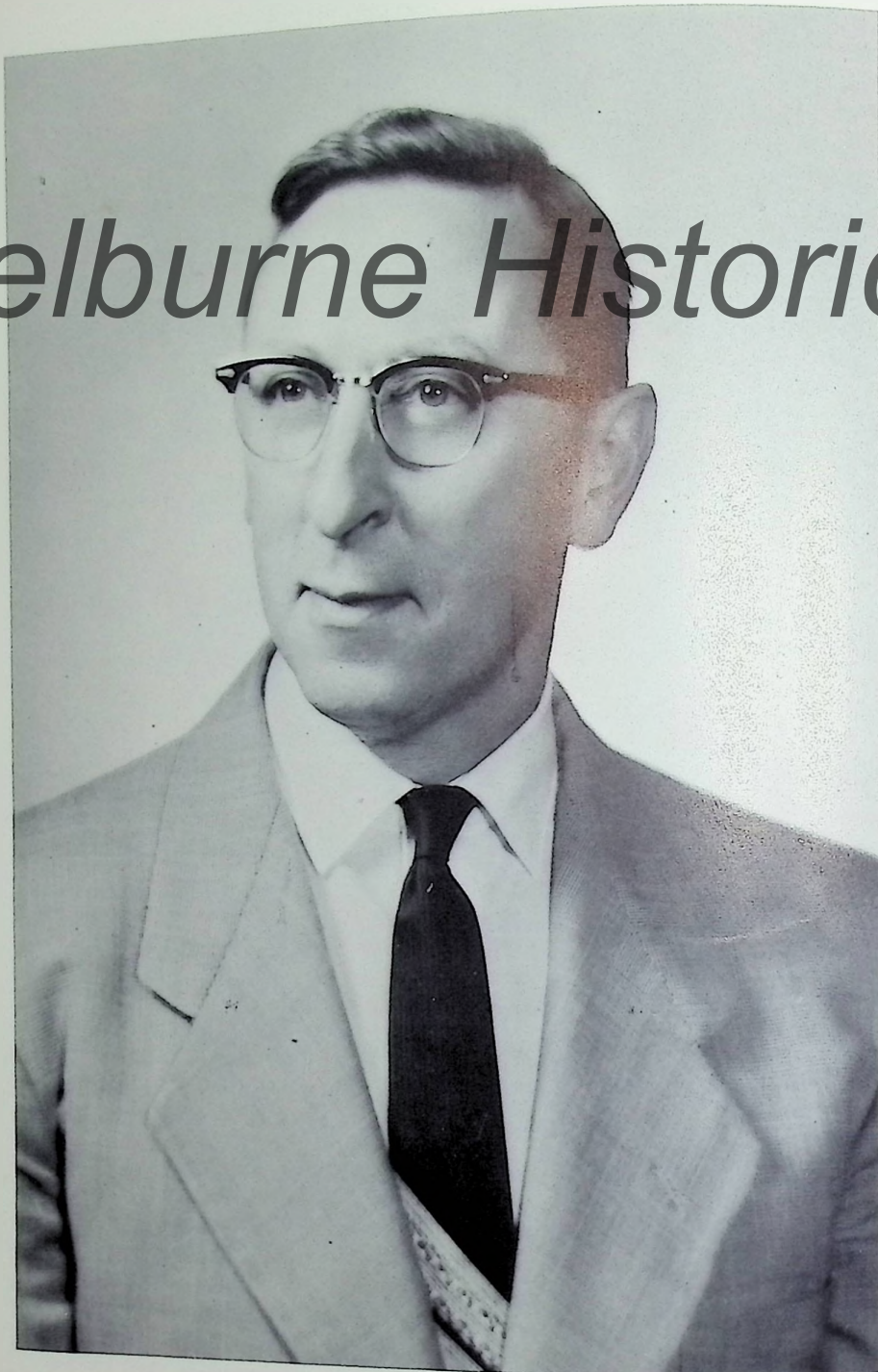
Left to right: D. Jones, J. Jacobs, L. Herzig, R. Gates, J. Wright, G. Van Guilder, F. Goodell, H. Andrews, Mr. Nelson.

This page sponsored by CLAIRE'S BEAUTY SHOP



WE SING YOUR PRAISES...

# Shelburne Historical Society

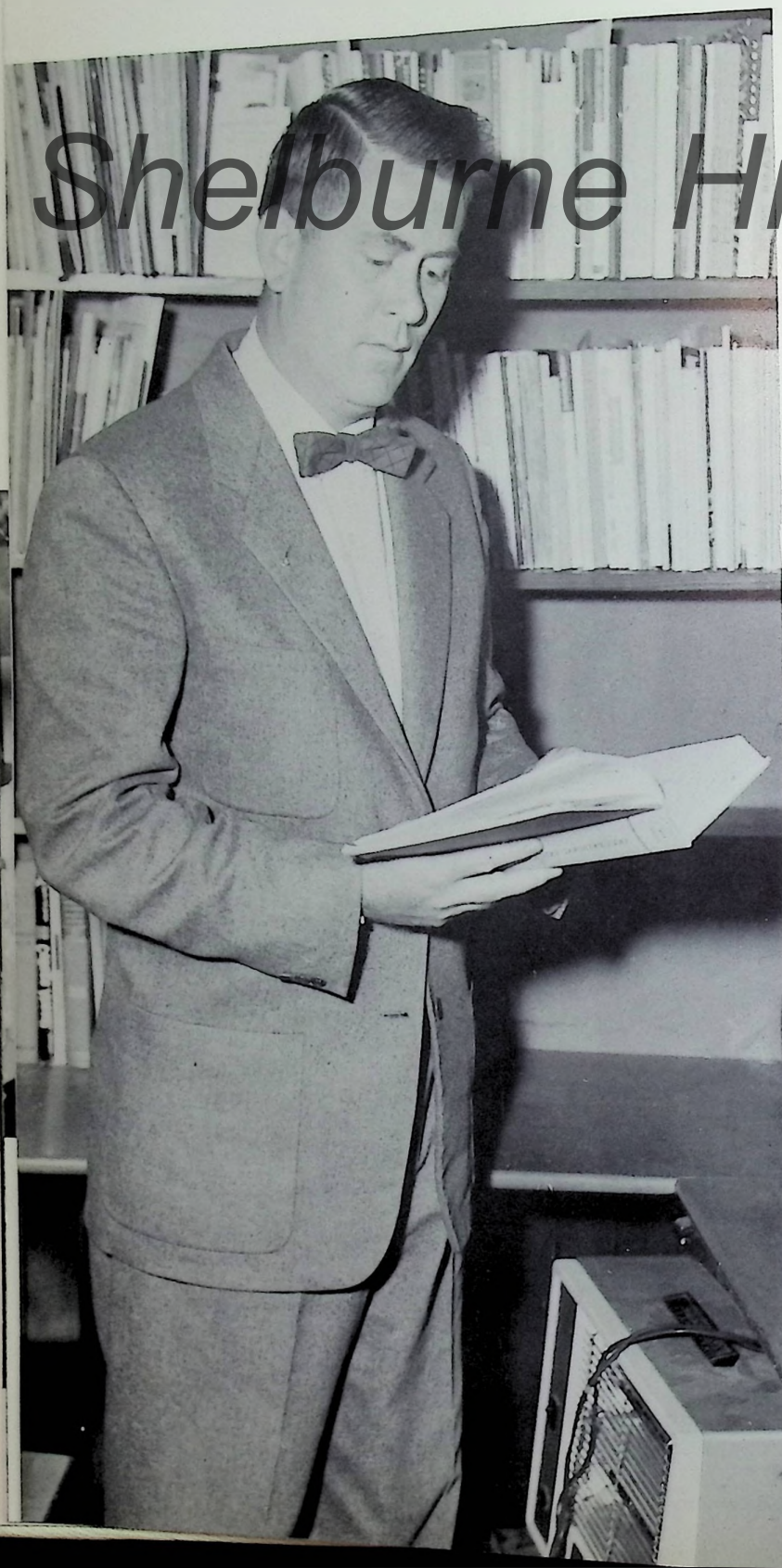


In genuine appreciation of your unceasing efforts to make our school a more meaningful and harmonious institution of learning, we dedicate the 1961 Arms Student to you, Nathan S. Hale.





From Our Principal

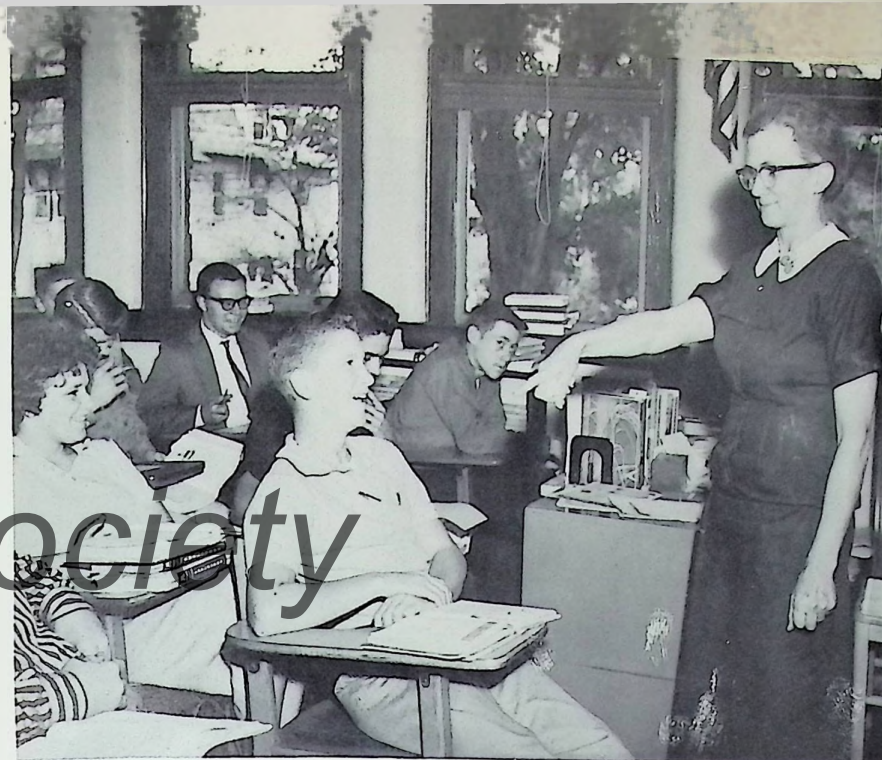


Not too many years ago the educator was interested in the teaching of the three "R's". But today teaching has broadened the base to include the mental, the physical, and the emotional well-being of the student without sacrificing the depth of the past. One area in which this new concept has advanced is in the field of music.

Realizing that only a few students will reach greatness, but all will benefit, we have developed a program to emphasize the appreciation, the understanding, and the carry-over values inherent in this ageless world of music. Because of this new approach the students at Arms Academy, through direct or vicarious experiences, will live a happier and fuller life.

Mr. Beattie

# Shelburne Historical Society



"You"



MARIA E. DAVENPORT  
Boston University  
English  
Commerce and Industry  
Junior Class Advisor  
Sentinel Advisor



ISABELLE E. HALLER  
Bates College  
English  
National Honor Society  
Advisor  
The Arms Student Advisor  
Teen Age Book Club



"Little Things Mean a Lot"



MARIE E. SAUNDERS  
University of Massachusetts  
English  
Freshman Class Advisor  
Senior Play Advisor  
Dramatic Club Advisor



"Ooh eee ooh ah ah"  
J. ARDELLE CHASE  
Colby College  
French  
Latin  
Senior Class Advisor  
French Club Advisor





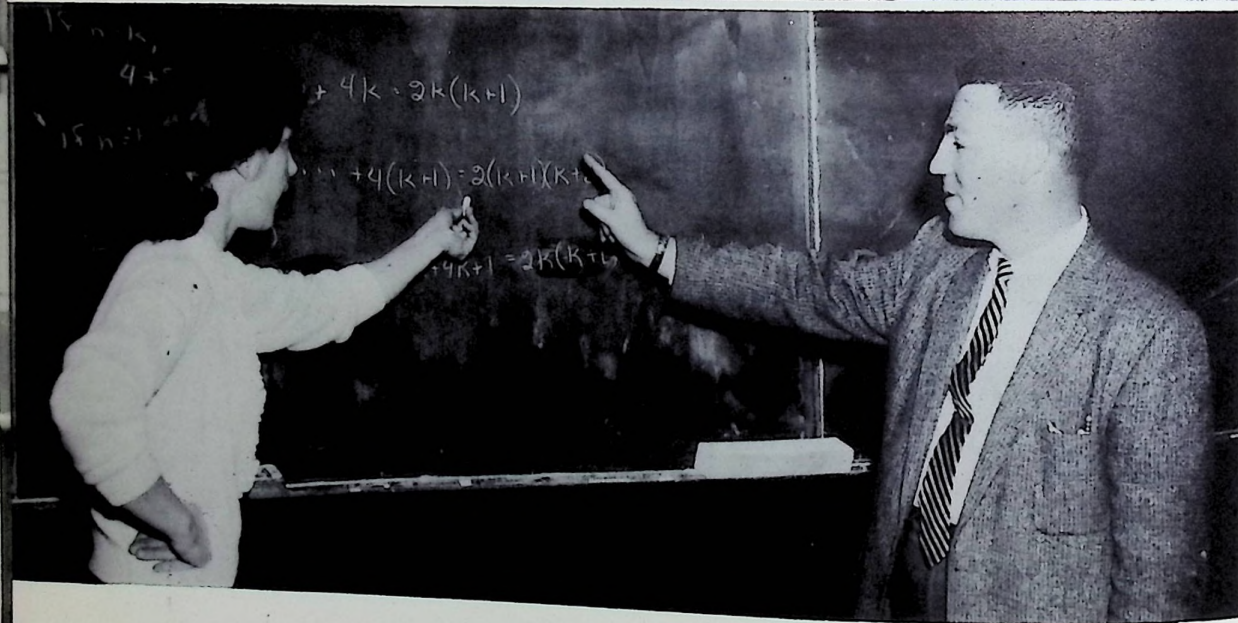
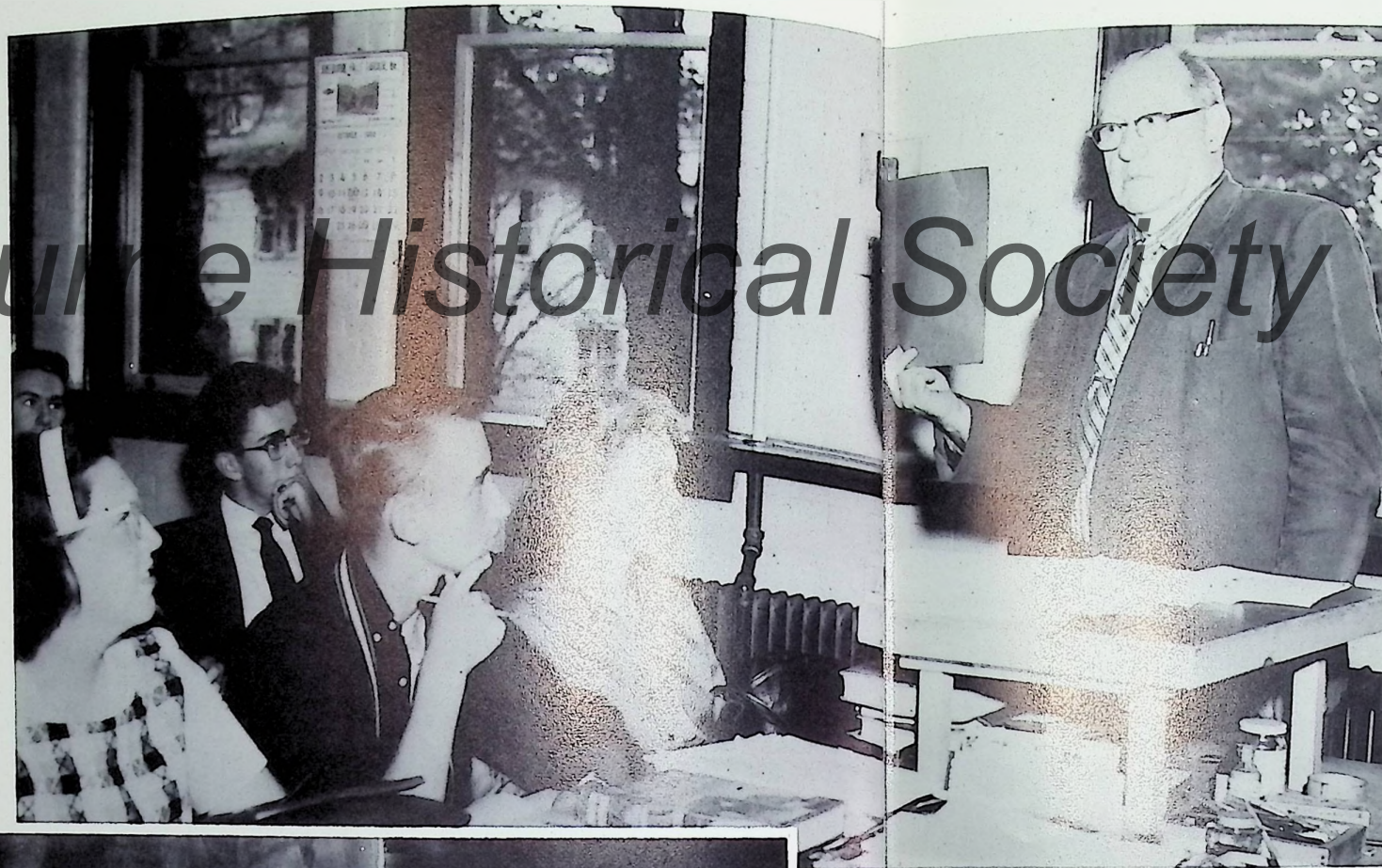
# MATH AND SCIENCE COURSES DEVELOP BUDDING ENGINEERS AND SCIENTISTS



HERBERT S. MERRITT  
Keene Teachers' College  
Math  
Freshman Class Advisor

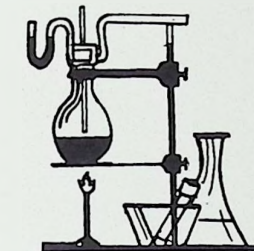


RUTH E. LAW  
University of  
Massachusetts  
Math, English,  
Public Speaking



"Wrong Again"

This page sponsored by the SNACK BAR, Greenfield.



EDWARD R. FRUDE  
Colby College  
Physical Sciences  
Vice Principal  
Business Manager  
of Athletics



NATHAN S. HALE  
University of  
Massachusetts  
Physical Sciences  
Student Council Advisor

"He's Got the Whole World" . . . on his list!

"Small World", isn't it?

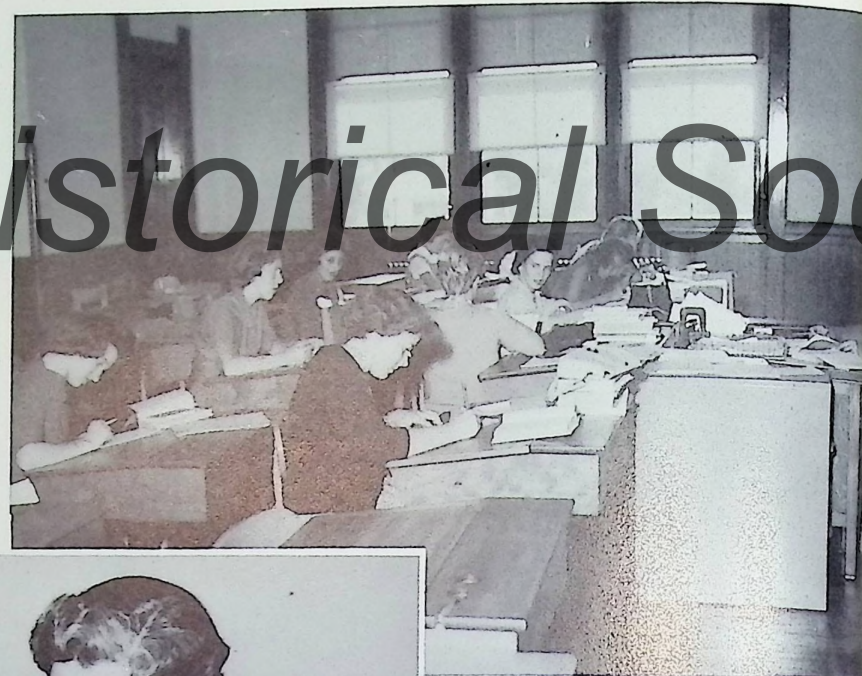




# COMMERCIAL AND VOCATIONAL COURSES PROVIDE WELL-ROUNDED CURRICULUM



ELLEN L. THORN  
University of Vermont  
Commercial  
Sophomore Class Advisor

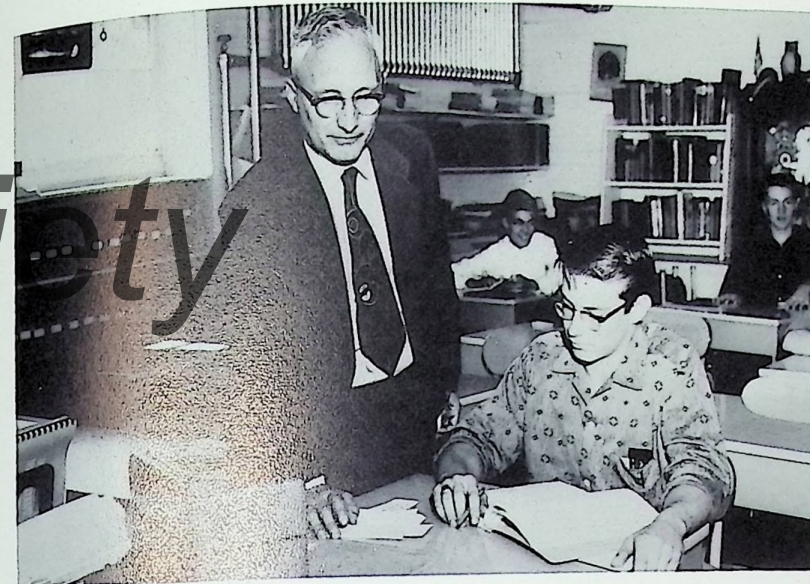


It checks!



ANGELINE C. STEMPLE  
Bay Path Institute  
Commercial  
School Accountant

"School Days"



"I Have Problems"



ERNEST R. GIFFIN  
University of Vermont  
Vocational Agriculture  
Future Farmers of  
America  
Junior Class Advisor



HELEN C. FRENCH  
Framingham State  
Teachers' College  
Home Economics

"Pins and Needles"



"Ain't That a Shame"



EDMUND P. PALMERI  
Fitchburg Teachers'  
Training  
Industrial Arts  
Drivers' Education





## THE PAST SHAPES THE FUTURE

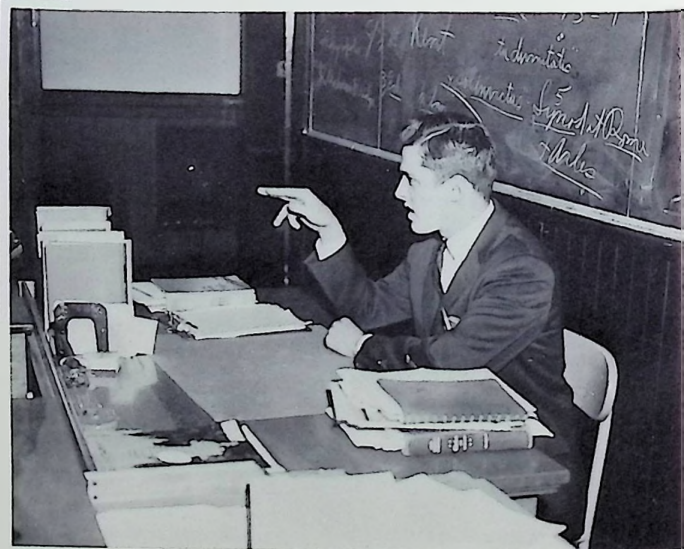


"Outside My Window"

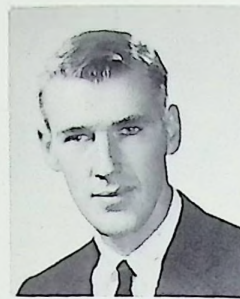


"Smile for the People!"

"No If's - No And's"



This page sponsored by the VILLAGE GENERAL AND PACKAGE STORE.



JOHN M. MAC LEOD  
University of Massachusetts  
History  
Physical Education  
Basketball  
J. V. Baseball  
J. V. Football



JOHN J. SCOTT  
Worcester College  
Problems of Democracy  
Civics  
World History  
Debate Club Advisor  
Sophomore Class Advisor

## SPORTS, ART, AND MUSIC



"Ain't Misbehavin'"

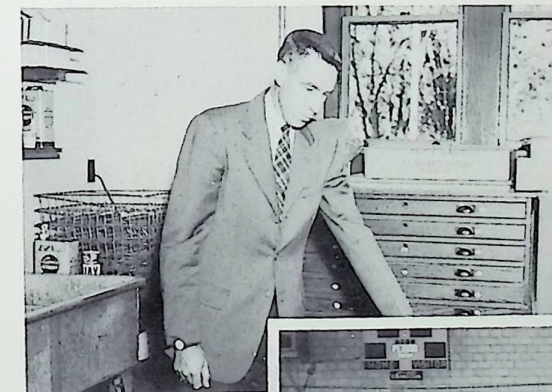


JOHN J. SHEA  
Boston University  
Vesper George School  
of Art  
Art  
Art Club Advisor



STANLEY H. SMITHERS  
Syracuse University  
Band, Chorus

## ....A PART OF EDUCATION



"How About That"



"The Music Man"



JAMES P. PIEHL  
Springfield College  
Physical Education  
Football  
Baseball  
J. V. Basketball  
Math



NANCY E. MAC LEOD  
St. Lawrence University  
Girls' Physical Education  
Field Hockey  
Basketball  
Softball  
Cheerleader Advisor  
Ski Club Advisor



## COUNSELING... AN IMPORTANT FIELD



JOHN E. NELSON, JR.  
Northeastern University  
Boston University  
German  
Guidance  
Senior Class Advisor  
F. T. A. Advisor  
German Club Advisor

"Guiding Star"



## THEY ALSO SERVE



Mrs. Sumner



Mr. Jenks, Mr. Burnap



l. to r. Mrs. H. Phillips, Mrs. B. Phillips, Mrs. C. Purinton.

STEADY  
Music by JIMMY McHUGH

ONDERFUL  
OF PARIS  
Music by MARGUERITE MONNOT

WE IS HERE  
GERSHWIN

mi Technicolor musical

An American in Paris

To the Music of  
GEORGE GERSHWIN

Starring GENE KELLY

and Introducing LESLIE CARON  
with OSCAR

SENIORS





This page sponsored by  
L. A. KOHLER  
Your Philco Dealer  
Greenfield Turners Falls

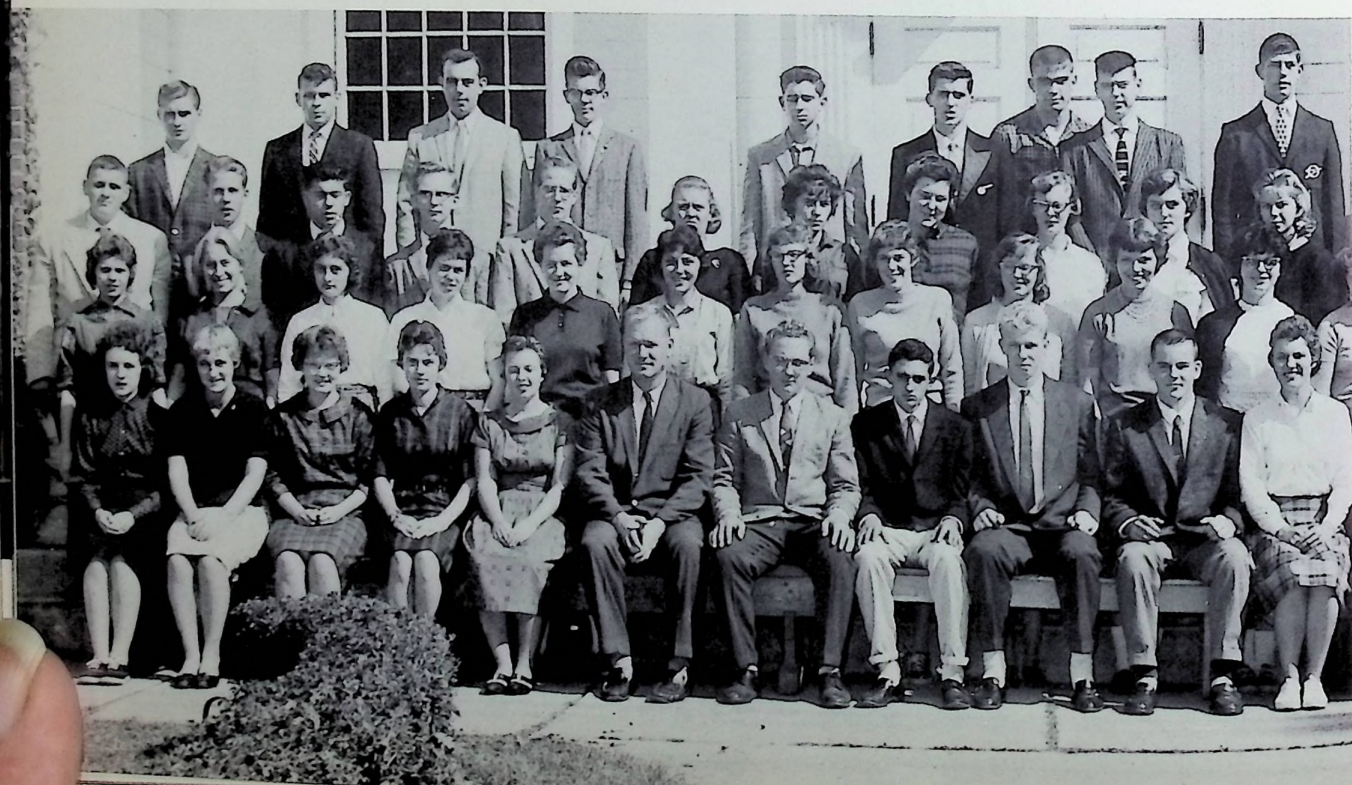
## OFFICERS

1. to r. D. Alden, Secretary; C. York, Treasurer; E. O'Brien, President; R. Temple, Representative to Student Council; R. Phillips, Vice President.

## THE SENIOR CLASS

Completing their final year at Arms, the seniors found their duties many and enjoyable. Planning for the future, applying to different colleges and firms, and studying hard to meet requirements were just a few of these. Under the able leadership of the class president, Ethan O'Brien, the class of 1961 was the first

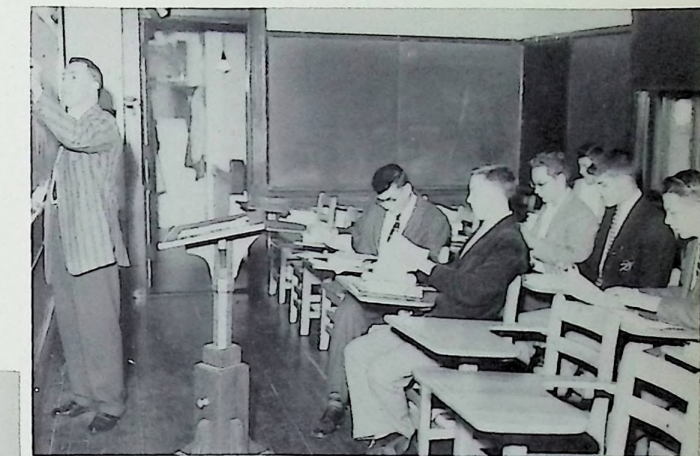
class to pay all AASA dues and was top class in the magazine sales. Though the seniors now leave Arms Academy, they will never forget what they have learned here not only in scholastic accomplishments but also in character development.



1. to r. J. Cromack, J. Wright



1. to r. first row: L. Shippee, C. Hoyt, M. Fischlein; second row: J. Stanley, G. King, M. Fiske, A. Carter; third row: J. Stemple, R. Miller, B. Grogan, A. Clark, D. Ball; fourth row: J. Sturgeon, B. O'Dell, E. Gilbert, J. Elwell, S. Brown; fifth row: R. Phillips, J. Gould; sixth row: Mrs. Haller.



1. to r. Mr. Merritt, C. Halberg, A. Green, R. Temple, J. Cromack, J. Wright, G. Van Guilder.



1. to r. first row: B. O'Dell, S. Caron, M. Litchfield, B. Quinn, J. Taylor, Mr. Nelson, R. Temple, R. Phillips, E. O'Brien, C. York, D. Alden, Miss Chase, C. Abbott, D. Mills, E. Gilbert, J. Crocker, J. Stanley; second row: M. Fischlein, P. Bond, L. Shippee, A. Carter, N. Johnson, A. Chasles, D. Ball, C. Hoyt, N. Root, M. Fiske, S. Brown, J. Gould, J. Elwell, L. Herzig, N. Mitchell, V. Temple, J. Vincent, J. Stemple; third row: G. Call, G. Van Guilder, N. Tetreault, H. Field, W. Walker, J. Carpenter, G. Gilbert, F. Woods, S. Coombs, S. Bray, B. Grogan, B. Carpenter, A. Green, W. Pollard, R. Miller, G. King; fourth row: K. Gavin, L. Laffond, W. McCloud, J. Wagner, J. Sturgeon, R. Dodge, R. Amnott, C. Halberg, J. Wright, J. Cromack, R. Truesdell, L. Lively, K. Roberts.

This page sponsored by TOD MORDEN  
STABLES, Cummington.



## THE SENIORS LOOK TO THE

What would happen if the entire class of '61 were sent to New York City immediately after graduation and were turned loose to find fame and fortune amid the skyscrapers? Let your imagination run wild, for a moment, while we take each of the sixty-six members on a musical joy ride with the aid of the senior candids and the song, "Young at Heart".

# elburne Historical Society

"Fairy tales can come true"

The beginning of the trip to New York wasn't too successful. We were all going in Bill McCloud's car and it took us three hours to get his "starter" working. Even then, Brian Carpenter and Donna Alden were late. It seems Brian's clock stopped and Donna "just couldn't say goodbye". Carol Abbott was a little late, too; and when she finally arrived, she curled up in a corner and dozed off. Clearly it had been "another sleepless night".



"It can happen to you"

Most of the trip was uneventful except for one little incident. Somewhere along the Connecticut Turnpike Mary Litchfield took on a greenish hue and sheepishly whispered from somewhere in the back, "I don't feel so good!" Unfortunately, we found Bill's "stopper" wasn't in the peak of condition, either, but our four Future Nurses: Donna Mills, Sue Bray, Nancy Mitchell, and Aline Chasles kept the situation well under control.

If You're Young at Heart



"For it's hard, you will find"

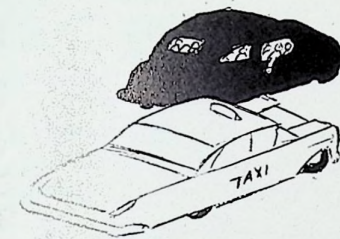
Upon entering the city, Bill announced that he was tired of driving, so the first volunteer, Kenneth Roberts, took over while Marie Fischlein and Barbara O'Dell quivered under the seats and brave Cindy Hoyt cheered him on. Kenneth maneuvered through the traffic, which seemed to present unusual opposition. On Madison Avenue we heard, to our chagrin, the unmistakable whistle of an officer of the law, who snarled in his best Brooklyn accent while walking toward the car, "Do ya always drive on the left side of the road?" Luckily, he took one look at the mass of humanity in the car and fainted.

## FUTURE

"To be narrow of mind"

Did we say "luckily"? It wasn't long before we had most of the New York City Police Force breathing down our necks. Why, we must have tied up traffic on Madison Avenue at least two hours while Gordon Van Guilder, Linda Herzig, and Arthur Green talked us out of our predicament. To our surprise, the police relented on the condition that one of us stay behind to direct traffic in the absence of the dizzy one. John Wright volunteered because he had had experience in the cafeteria.

If You're Young at Heart



"You can laugh when your dreams fall apart at the seams."

Tony York had come to the city with the intent of finding a sponsor for his new invention--a portable canvass sheep barn complete with accessories. With the aid of Levi Lively, Joseph Wagner, and Ray Amnott, he had worked long hours to develop his project. But unfortunately he had put it in the back seat; and when Kenneth had accelerated, Greg King had accidentally sat on it. The project was demolished, but Greg looked so funny with a feed cup on his head no one was angry.



"You can go to extremes with impossible schemes"

We hadn't gone very far when Conrad Halberg suggested we drag one of the yellow blurs that were hailed as taxicabs. Kenneth agreed, so at the next stoplight he challenged one of the brazen drivers to race. As soon as the light changed, we all flattened against the backs of the seats; jerked and plummeted through the traffic with such tremendous speed that our auto enthusiasts, Richard Truesdell, Howard Field, and Valerie Temple, nearly went crazy with sheer joy; and the car nearly fell apart with sheer agony. As it was, we lost the left front bumper and a door.



"And life gets more exciting with each passing day"

We left Lenny Laffond at Radio City, where he was to become costume manager of the Rockettes, and proceeded to Yankee Stadium to drop off Bill Pollard and Ethan O'Brien. These two boys were going to try out for the New York Giants' football team: Ethie as tackle and Bill as ground man. Asked to explain his ambition, Bill told us he believed the Giants needed someone small and fast enough to carry the pigskin through small holes in defensive units. The last we heard, though, Bill was in the hospital suffering from multiple cuts and bruises. One afternoon Pat Sommerall mistook Bill for the football itself and gained three points for the Giants by kicking him over the posts for a field goal.





"Don't you know that it's worth . . . ."

To our chagrin, Bill's car gasped its last wheeze about a block from the Town Hall. We all piled out, and Bob Coutu and Nelson Tetreault pushed the dilapidated auto to the nearest antique dealer. We elected Noreen Johnson to barter for us. None of us were very happy when the dealer refused to deal . . . especially Bill . . . who considered it a terrible insult. Dick Temple saved the day by opening the trunk and producing his Volkswagon. He'd packed it away as an emergency measure. So we all piled in and once again sped through the New York streets.



"For as rich as you are"

Our attention was called next to a poker game taking place on the floor of the front seat between John Rush and Emily Gilbert. Believe it or not, Emily had John saying "uncle"! Amy Clark and Jane Gould were waiting for a chance to take on the unfortunate one. We'll never tell John that the reason for his bad luck was that Kelly Gavin was coaching from the glove compartment!

"And love is either in your heart or on the way"

Joyce Carpenter wanted to be left at the Town Hall so she could apply for a marriage license. When we asked who the lucky man was, she replied she had several prospects, but hadn't made up her mind yet. Joyce Stanley was also thinking about wedding bells, while Sandra Coombs reminisced. In the back seat, Jimmy Sturgeon, panicked by the success of some of our "man-hunters", tried to form a "Society for the Prevention of Cruelty to Bachelors" but received very little support.



"Ev'ry treasure on earth"

We proceeded to the Conrad Hilton Hotel where Bill Walker had an engagement to play the trumpet, and Betsy Quinn hoped to make her fortune on the trombone. Ray Miller had a kitchen engagement there too. Anyway, when we skidded to a stop, there was a big commotion in the back seat. All there was to be seen were countless flailing arms and legs. Finally a head (Eob Phillip's) poked up through the tangle, and we learned that Bill Walker had been either left somewhere or misplaced. You can't imagine the panic that ensued! After about five minutes of chaos, Sandy Brown found him under her pocketbook, which was under Donna Mill's box of souvenirs. We've heard he hasn't been the same since.

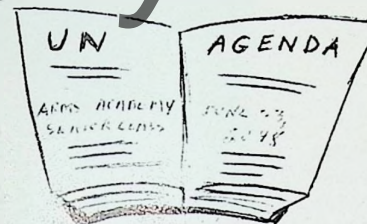
To Be Young at Heart



"It's better, by far"

Perhaps it was the confusing New York streets. No one knows exactly why Dick's Volkswagon stopped in front of the United Nations Building and refused to go any farther . . . but we all know it was the #1 disaster of the trip. Leave it to us, though, to find a way out. With Lane Shippee, Nancy Root, and Gwen Gilbert leading the way, we all trooped into the UN Building to request emergency relief.

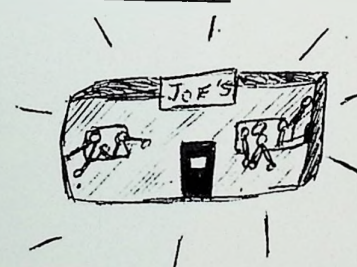
To Be Young at Heart



"Look at all you'll derive out of being alive"

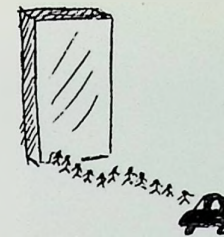
Turned down by the General Assembly, we were heartbroken. It seemed we would never be able to accomplish all we had set out to do. So each and every one of us sat down on the curb and moped. However, it wasn't long before the good spirits of Diane Ball, Judy Eiwel, Judy Stemple, George Call, and Ronnie Dodge overcame the glum mood. With the other four eagerly supporting him, Ronnie stood up and said, "What does it matter? We'll manage somehow . . . we're all healthy and free from school! Besides, I'm hungry."

If you're Young at Heart



"You have a head start"

"To the Arms Academy class of '61:"  
May we never forget our four years at Arms Academy. May we remain ever grateful to those who guided us through work and play. Though we must part now to seek our individual corners of the world, may we fondly remember each other. May we never lose sight of prayer when we are in need. May the laughter we hear now be everlasting. May friendliness and good will never fade from our hearts. Yes, and may we face the future with courage, faith, and hope . . . for our four years at Arms have given us all a "head start".



"And if you should survive to a hundred and five"

We had no idea which way to go, so we all split up to look for the General Assembly and decided to meet at the entrance in a half hour and then proceed to the Assembly Hall en masse. When we again assembled, to our astonishment we found that Sandy Caron, Barbara Grogan, Bonnie Phelps, Mary Fiske, and Judy Vincent had been found by five young, handsome European ambassadors, who promised to put in a good word for us. But the verdict in the Assembly was "Well, according to the agenda, it will come to the Assembly's attention in 87 years . . ."



"And here is the best part"

Moments later we were all seated on stools in the romantic, scenic Joe's Delicatessen. Over delicious burned hamburgers and warm coke, dancing to the strains of the one song Joan Crocker could afford to play on the juke box (Young at Heart), we discussed the events of the day. A feeling of warm togetherness spread throughout the 8' x 12' dining room. In fact, we were so close that while they were dancing, Pat Bond and Jimmy Cromack were pushed out the door, and Jean Taylor was plopped squarely in the trash can. Then Frances Woods proposed a toast . . . .





CAROL BERTHA ABBOTT  
November 4, 1943  
Syracuse, New York  
"Crabbit" can always be found with Judi at Northfield. "But I haven't a thing to wear!" Did you ever see all the clothes in her closet?  
General: Chorus 1,2,3,4; The Arms Student 4; Ticket Taker 1,2.



"Another Sleepless Night"



"I Can't Say Good-bye"



DONNA LESLIE ALDEN  
February 20, 1943  
Greenfield, Massachusetts  
"Aldie"--one of Greenfield's greatest fans; our Freshman Booster Day Queen. Never a dull moment with Donna around!  
Commercial: The Arms Student 4; National Honor Society 2,3; Art Club 1,2; Art 1,2; Ticket Taker 1; Varsity Cheering 3; J. V. Cheering 1,2; Class Secretary 4; Booster Day Queen 1; Prom Court 3.



"Com Pah Polka"



"March On"

RAYMOND LINWOOD AMNOTT, JR.  
April 19, 1942  
Masardice, Maine  
"Ray"--6'3"--will someday make a good minister. Hobbies include basketball, hunting, and cooking. Holds up the bass in the band. Always a gentleman.  
General: Chorus 1,2,4; Band 1,2,3,4; Future Nurses 4; Varsity Football 4; J. V. Baseball 3; Varsity Basketball 3,4; J. V. Basketball 1,2.



DIANE DOROTHY BALL  
March 3, 1943  
Orange, Massachusetts  
"Di" or "Boogie"--our high-stepping head majorette. Loaded with school spirit and always behind the team. One of Cindy's best pals. Always full of questions. "Curiosity killed a cat."  
Commercial: Chorus 1,2,3,4; The Arms Student 1; Future Teachers 4; Ticket Taker 1; Twirlers 1,2,3; Head Twirler 3; Head Majorette 4; Senior Play; J. V. Cheering 1,2.



PATRICIA BETTY BOND  
October 10, 1943  
Greenfield, Massachusetts  
"Pat" hails from Rowe. Flirt. What's the hair style today? "Hey, kids, I've got a new joke!" College Preparatory: French Club 2,4; Future Teachers 2,3,4; Art Club 1; Art 1; Sentinel 3; Varsity Field Hockey 2,3; Senior Play.

"Kookie, Kookie, Lend Me Your Comb"



"Country Girl"

SUSAN JANE BRAY  
August 4, 1943  
Buckland, Massachusetts  
"Sue" loves cars, especially her green truck and Red's black Ford. A leader in the magazine drive. Good all around student and most loyal friend to all. Sure to be a success in her chosen field.  
College Preparatory: Chorus 1,2,3,4; French Club 2,4; The Arms Student 2,3,4; National Honor Society 3,4, Vice-President 4; Band 1,2,3,4; Future Nurses 2,3,4; Varsity Basketball 2,3,4; Sentinel 3,4, Editor Sentinel 3,4; Ticket Taker 2; Tufts Regional Conference 3; Senior Play; Student Council 4; Treasurer 4; DAR Award 4.



SANDRA JEAN BROWN  
October 18, 1943  
Colrain, Massachusetts  
"Sandy" always seen bombing around in her '55 blue and white Chevy. "I drove only a hundred miles yesterday." Dark black hair always set on rollers.  
General: Chorus 1,2; The Arms Student 4; Ticket Taker 2,3,4.



"Beatnik Blues"

GEORGE HERBERT CALL  
November 17, 1943  
Colrain, Massachusetts  
Coach's right-hand man. What would they do without him? Good-natured. Blushes easily. Well informed on current affairs.  
College Preparatory: French Club 2,4; Debate Club 3,4; Baseball Manager 3; Basketball Manager 3; Football Manager 4.



"Handy Man"





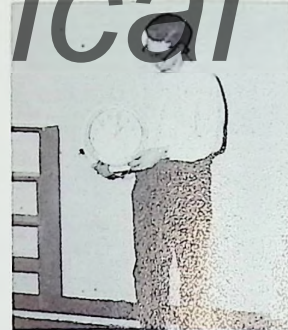
SANDRA GAY CARON  
September 29, 1943  
Greenfield, Massachusetts  
"Sandi" Hard worker--loyal to The Arms Student! Has interests in the U.S. Army! Seldom seen without the green Corvair.  
Commercial: Chorus 1,2,3,4; The Arms Student 4; National Honor Society 2,3,4; Varsity Cheering 2,3; J. V. Cheering 2.



"Save the Last Dance for Me"



BRIAN ALAN CARPENTER  
July 10, 1943  
Hartford, Connecticut  
"Worm" just makes it to school. One with few words. What's the attraction in Shelburne? Future Mechanic Industrial Arts.



"Good Time"



"Let the Little Girl Dance"

MARIE ALINE CHASLES  
March 22, 1943  
Buckland, Massachusetts  
"Aline" "Frenchie" Vivacious cheerleader. Good school citizen. Black hair and brown eyes. Boundless energy.  
College Preparatory: Chorus 1,2,3,4; French Club 2,4, French Club President 4; The Arms Student 2,3,4, Business Manager 3,4; Band 1,2,3,4; Future Nurses 3,4; Silver A 1; Representative to Student Council 2, Secretary 2; Class Secretary 1; Varsity Softball 3; J. V. Cheering 1, Varsity Cheering 2,3,4, Co-Captain 3, Captain 4; Booster Day Court 2; Senior Play; Senior Prom Queen.



AMY JOYCE CLARK  
January 7, 1943  
Buckland, Massachusetts  
Quiet and shy. Always a good word for everyone. Dependable typist. Who said all girls are chatterboxes?  
Commercial: Chorus 1,2,3,4; Art Club 1; Art 1.



"Singing in the Rain"

JOYCE MARIE CARPENTER  
February 20, 1942  
Greenfield, Massachusetts  
"Carpie" Faithful chorus member. Can really carry a tune. Found behind the counter serving lunch--"Sorry, no seconds today!"  
General: Chorus 1,2,3,4; Band 1,2,3,4; Western Massachusetts District Chorus 1,4; All State Chorus 1; Varsity Field Hockey 2.



SANDRA DONEILO COOMBS  
August 28, 1942  
Shelburne, Massachusetts  
"Sandi" The only married member of our class.. Very studious. Whiz at math. Hails from Coombs Hill.  
College Preparatory: Chorus 1,3; French Club 3; The Arms Student 1; Band 1,2; Future Nurses 3; National Honor Society 4.



"Band of Gold"

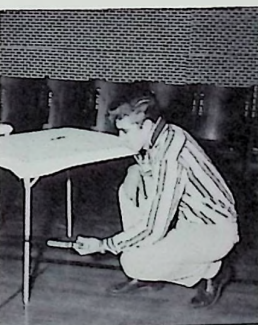


"Mirror, Mirror, on the Wall"

ANN ESTHER CARTER  
January 9, 1943  
Greenfield, Massachusetts  
Very quiet. Enthusiastic art club pupil. Spent a year in Texas and never discovered any oil!"  
College Preparatory: Art 1,4; Art Club 1,4; Sentinel 3, Associate Editor 3.

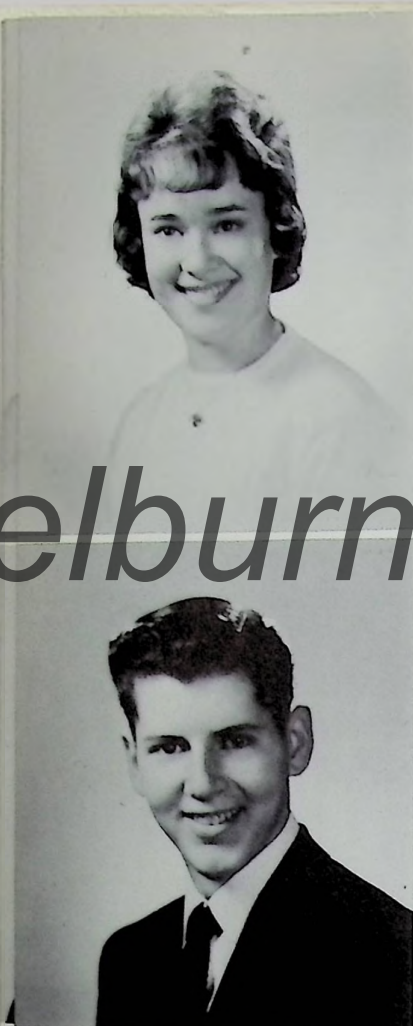


ROBERT MARSHALL COUTU  
August 18, 1943  
Colrain, Massachusetts  
"Motts" is very ambitious. Always ready to help. One of our good shop workers. Deep voice. That engaging shy smile.  
Industrial Arts: Varsity Football 4; Varsity Baseball 3; Art Club 1,2; Art 1,2.



"Working Man"





JOAN LESLIE CROCKER  
August 29, 1943  
Buckland, Massachusetts  
"Joany" Artistic. Dependability is her greatest asset. Hard worker on The Arms Student. Quiet till you get to know her.  
College Preparatory: Chorus 1,4; French Club 2,4; The Arms Student 2,3,4, Associate Editor 2,3, Assistant Editor 4; Future Teachers 2,3,4, Vice-President 3, Secretary 4; Art 1,2,4; Art Club 1,2,4, Vice-President 2, Secretary 1,4; National Merit Scholarship Letter of Commendation.



"Able One"



"Nice and Easy Does It"



JAMES THOMPSON CROMACK  
October 19, 1943  
Colrain, Massachusetts  
"Jimmy" Reserved--tall and straight. Easy-going. Likes to help others in math. Doesn't like to be interrupted. Loves to hunt and fish.  
College Preparatory: French Club 2,4.



"Teen Angel"



"Service With a Smile"

RONALD FRANCIS DODGE  
May 7, 1943  
Buckland, Massachusetts  
"Brown" "Dodgie" Brown wavy hair; real sports fan. Been in Colrain lately?  
General: French Club 2; J. V. Baseball 1,2; Varsity Basketball 4; J. V. Basketball 3.

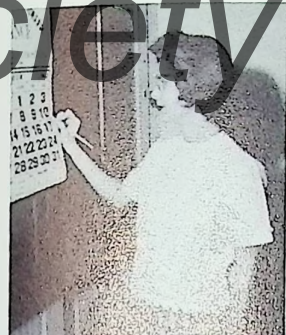


JUDITH EILEEN ELWELL  
December 5, 1943  
Colrain, Massachusetts  
"Judi" Great giggler. Small but powerful. Can be seen with Carol. Haunts Northfield. Always willing to help out.  
Commercial: Chorus 1,2,3,4; The Arms Student 4; Senior Play; Representative to Student Council 1.



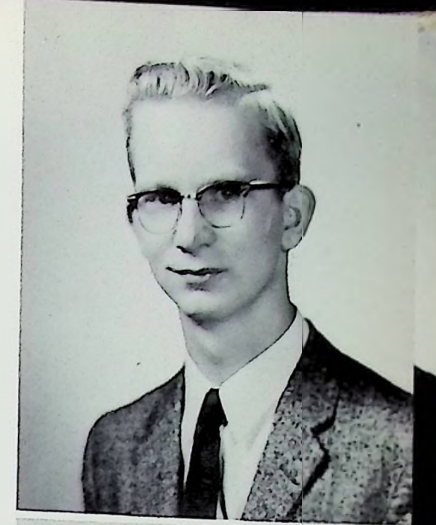
HOWARD ARTHUR FIELD  
July 1, 1943  
Shelburne, Massachusetts  
Oh, that red hair! Faithful band member. Bombs around in a '57 blue and white Ford.  
General: Chorus 1; French Club 2,4; Band 1,2,3,4.

"Hot Rod Jalopy"



"I Can Hardly Wait 'Till Saturday Night"

MARIE BONITA FISCHLEIN  
June 22, 1943  
North Adams, Massachusetts  
"Mido" Sometimes seen with Joyce--often seen with Winston. Happy-go-lucky personality. "I think I'll frame my driver's training certificate."  
Commercial: Chorus 1,2,3,4; French Club 2; The Arms Student 2; Art 1; Art Club 1; Ticket Taker 1,2.



MARY ISABEL FISKE  
December 30, 1944  
Shelburne, Massachusetts  
"Fisker" Always throwing parties. Seen at the country fairs with her prize-winning cows! Great talker. Loves to flirt.  
Commercial: Chorus 1,2,3,4; The Arms Student 4; Band 2; Varsity Basketball 3; J. V. Basketball 2.



"Day Dreaming"

LAWRENCE KELVIN GAVIN  
February 9, 1943  
Newport, Rhode Island  
"Kelly" Snappy dresser. Member of the Maple Street Clique. Hobby--girls. Will someday join the army.  
General:



"Play It Cool"





EMILIE ANNE GILBERT  
May 18, 1943  
Lyonsville, Massachusetts  
"Em" wants to be a secretary someday. Loves babysitting, typing, and quiet boys. Never complains. "Jeepers!"  
Commercial: Chorus 1; French Club 2; Art Club 3; Art 3.



"Angel's Smile"



"You Can't Get to Heaven on Roller Skates"



GWENDOLYN GILBERT  
March 23, 1942  
Buckland, Massachusetts  
"Gwen" works at the Yankee Kitchen. Hobbies include horses, skating, and boys. Good sense of humor. "Who, me?"  
Commercial: Chorus 3,4.



"Typing a Letter"



"Out of Space and Time"

JANE ELVIRA GOULD  
October 31, 1943  
Buckland, Massachusetts  
"Janie" is a whiz at typing, shorthand, or anything else she attempts. Quiet. Bound to be a success. "But I have only a 99 average!"  
Commercial: Chorus 1,2,3,4; National Honor Society 2,3,4, Secretary 4; Class Secretary 3; Sentinel 4; The Arms Student 4.

ARTHUR ALLERTON GREEN, JR.  
February 18, 1943  
Wethersfield, Connecticut  
"Greenie" dreams of becoming an astronaut scientist, or the President of the United States. Gets a little peeved when people tell him to do something he's already doing. "I don't believe it!"  
College Preparatory: Chorus 4; Debate Club 4; Football Manager 4; Senior Play.

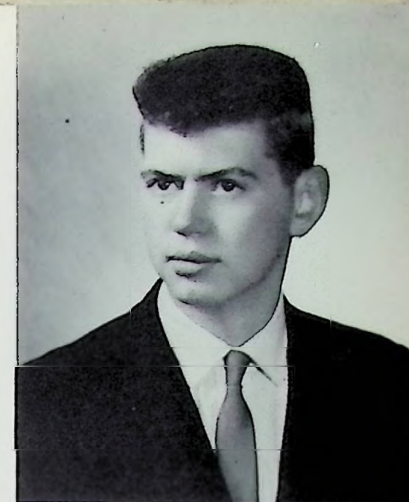


CONRAD CHARLES HALBERG  
September 24, 1943  
Shelburne, Massachusetts  
"Hamburg" loves cars and hot rod races. Orange, here I come! Plays mean bongos on the desks. "Hello 'dere, Sapphire!"  
College Preparatory: French Club 2,4.



"Beatnik Daddy"

"Portrait of Linda"



LINDA LEE HERZIG  
February 18, 1943  
Buckland, Massachusetts  
"Lin's" ambition is to become an artist. Member of the debate team for three years. Belongs to the Civil Air Patrol. Very friendly.  
General: Chorus 1,3; German Club 4; Art 1,3,4, Art Club 1,3,4, President 4; Ticket Taker 1,2; Debate Club 2,3,4.



CYNTHIA MAY HOYT  
November 15, 1943  
Shelburne, Massachusetts  
"Cindy-boo" plays varsity basketball. Hard worker and lots of fun. Good sport who is liked by everyone. "My pet peeve is Guess who!"  
Commercial: Chorus 1,2,3; The Arms Student 2,3,4; J. V. Basketball 1; Varsity Cheering 3,4; Senior Play.



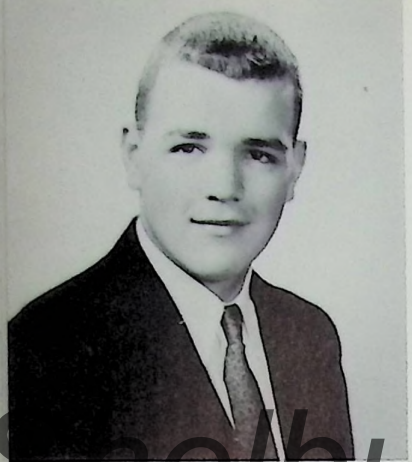
"Something Happened"

NOREEN ESTHER JOHNSON  
January 2, 1943  
Shelburne, Massachusetts  
Sports enthusiast. Future! physical education instructor. Just look at that list of activities below! Always had a joke handy. "Oh, dear me!"  
College Preparatory: French Club 2,4; Band 1,2,3,4; Future Teachers 3,4, President 4; Varsity Basketball 2,3,4; J. V. Basketball 1; Varsity Softball 1,2,3; Varsity Field Hockey 4; Field Hockey Co-Captain 4; Sentinel 3,4; The Arms Student 4; Senior Play; Class Vice-President 3; Student Council 3.



"Please Help Me I'm Falling"

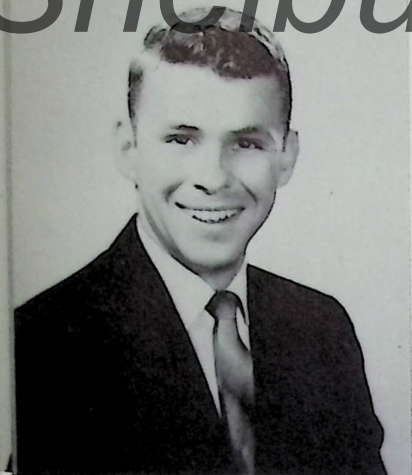




**GREGORY JOSEPH KING**  
January 10, 1943  
Griswoldville, Massachusetts  
Goes nuts over football. Works in his father's store. Lots of fun to be with. "What's the matter, Cindy? Did you flunk it?"  
General: Class President 1; Senior Play; Student Council 1; J. V. Football 1, Varsity Football 3,4, Co-Captain 4; J. V. Baseball 1; Varsity Baseball 2; French Club 2.



"I Can't Help You, I'm Falling Too"



**LEONARD JOHN LAFFOND**  
August 6, 1936  
Orange, Massachusetts  
"Lenny" A big flirt. Can be found afternoons toting groceries down town. Studious--Hard worker. A very welcome addition to our class.  
General: National Honor Society 3,4.



"I Like Girls and Girls Like Me"



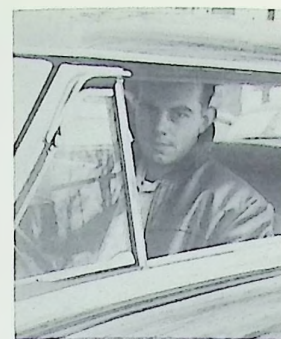
"Chicago, Here I Come"

**MARY IMOGENE LITCHFIELD**  
April 11, 1943  
Clinton, Massachusetts  
Faithful band member. Likes playing varsity basketball. Never says much. Nice to know. "Oh, is all this Chicago?"  
College Preparatory: Chorus 1,2,3,4; French Club 2,4; The Arms Student 4; Band 1,2,3,4; Varsity Basketball 2,3,4; Ticket Taker 2; Varsity Field Hockey 2; 4-H Delegate to Chicago 4.



"Country Boy"

**LEVI ROLAND LIVELY**  
May 25, 1943  
Heath, Massachusetts  
A future service-man. Likes to hunt. Raps the gavel in Future Farmers. "How'd that scratch ya?"  
Vocational Agriculture: Future Farmers 1,2,3,4, President 4, Reporter 3.



"My Starter Won't Work"



"Working After School"

**WILLIAM CHARLES McCLOUD**  
March 23, 1943  
Buckland, Massachusetts  
"Bill" Collects cars (real ones? latest models?) Aspires to be a draftsman or an illustrator. "I don't know them guys!"  
General.

**RAYMOND FRANCIS MILLER**  
May 18, 1943  
Shelburne, Massachusetts  
"Ray" a terrific dancer. Will be sporting a navy or army uniform in a few months--so watch out, girls! "That's enough out of you."  
General: J. V. Basketball 1,3; Art 1; Art Club 1.

**DONNA JEAN MILLS**  
September 14, 1943  
Shelburne, Massachusetts  
"Millsie" hopes to be a nurse. Always happy and easy going. Fun to be with. "When is Dick coming home, Donna?" No more flirting with Ethan.  
College Preparatory: Chorus 1,2,3,4; French Club 2,4; The Arms Student 2,3,4; Future Nurses 1,2,3; Silver A 3; Varsity Basketball 2,3,4; J. V. Basketball 1, Basketball Manager 1; Sentinel 3, 4; Ticket Taker 1; Senior Play.

**NANCY LOUISE MITCHELL**  
May 14, 1943  
Greenfield, Massachusetts  
"Mitch" Another future nurse. Loves horses. One of our snappy twirlers. "Dad-gum-it-all!"  
General: Chorus 1,2,3,4; Future Nurses 2,3,4; Varsity Softball 2; J. V. Softball 1; Twirlers 3,4; Varsity Field Hockey 4; 4-H Delegate to Chicago 4.



"Among My Souvenirs"



"My Charlie"





C. ETHAN O'BRIEN  
June 6, 1943  
Shattuckville, Massachusetts  
"O. B." Always in the midst of anything and everything. Blushes easily. Hopes to be a sports writer-and has a good start. Adaytime sleepwalker!  
College Preparatory: Chorus 1; French Club 2, 4; Varsity Football 2,3,4, Football Co-Captain 4; J. V. Football 1; Varsity Baseball 3; J. V. Baseball 1,2; Sentinel 3,4; Class President 4; Senior Play; Tufts Youth Conference 3; Student Council 4, President 4.



"Wake Me When It's Over"



BARBARA O'DELL  
December 2, 1941  
North Adams, Massachusetts  
"Barb" wants to be a secretary. Class flirt. Another of our fine twirlers. "You monster!"  
Commercial: Chorus 1,2,3,4; Twirlers 1,2,3.



"Party Girl"



"Fisherman's Dream"

ROBERT WARD PHILLIPS  
September 24, 1943  
Colrain, Massachusetts  
"Phil" is an avid sportsman. Quiet. Pals around with Bill and Sturge. Has an interest on North Street, too.  
Commercial: Varsity Baseball 3; J. V. Baseball 1,2; Varsity Basketball 3,4; J. V. Basketball 2; Sentinel 3; Class Vice-President 4; Student Council 4, Vice President 4.

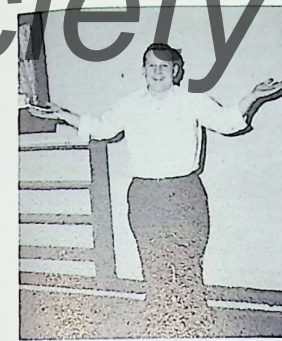


"All American Boy"

WILLIAM CARL POLLARD  
August 30, 1943  
Colrain, Massachusetts  
"Bill" is seen all year on the field, the court, and the diamond. Will make a swell coach someday. "You know it!"  
General: French Club 2; Varsity Football 2,3,4, Co-Captain Football 4; J. V. Football 1; Inter-County All Stars Team 3; Varsity Basketball 3, 4; J. V. Basketball 1,2; Varsity Baseball 2,3; J. V. Baseball 1; Sentinel 3; Class Vice-President 2; Student Council 2.



"Seventy-six Trombones"



"Why's Everybody Always Picking On Me?"



BETSY HARLEN QUINN  
January 7, 1944  
Leyden, Massachusetts  
"Bets" is a future teacher. Plays the trombone. Talkative when you get to know her. "Da, what'd ya say, Doc?"  
College Preparatory: Chorus 1,2,3,4; French Club 4; Band 1,2,3,4; J. V. Cheering 3; Girls' State 3.

KENNETH ALAN ROBERTS  
October 2, 1941  
Montague, Massachusetts  
"Tex" drives around in a big gray Oldsmobile. Always speaks to everyone. Hobby is centered around "Paleontology"--what's that?!  
General: J. V. Football 1.

NANCY DAWN ROOT  
June 4, 1943  
Shelburne, Massachusetts  
"Nanci" wants to become a telephone operator. "What number please?" Good seamstress. One of the shy members of the class.  
Household Arts.

LANE KATHRYN SHIPPEE  
November 13, 1943  
Buckland, Massachusetts  
Studious. Neat Dresser. Likes to take dictation and type. "Oh, my gosh--I forgot the routine!"  
General: Chorus 1,2,3,4; French Club 2; The Arms Student 2,3,4; National Honor Society 2,3, 4; Sentinel 3; Twirler 2,3,4, Head Twirler 4; Girls' State 3; Junior Prom Queen 3.



"Click Go The Shears"



"Up Above My Head"





**JOYCE ELLEN STANLEY**  
 July 12, 1943  
 Halifax, Vermont  
 Will someday be a beautician. Varsity cheerleader. Well liked by everyone--especially Gary! Sparkling personality. "I can't go, Gary is coming up tonight."  
 Commercial: Chorus 1,2,3,4; National Honor Society 2,3,4; Ticket Taker 1; Varsity Cheering 3,4; J. V. Cheering 2, Co-Captain 2; Booster Day Queen's Court 3,4.



"Wedding Bells Will Ring"



**JUDITH MARIE STEMPEL**  
 December 19, 1943  
 Greenfield, Massachusetts  
 "Stemp" likes to dance. Class clown. Whiz at the typewriter. Can always be seen writing letters. Got any new pictures in the mail lately, Stemp?  
 Commercial: Chorus 2; Future Teachers 3; Sentinel 3,4; Ticket Taker 1; J. V. Cheering 1,3.



"I'm Gonna Sit Right Down and Write Myself a Letter"



"Fascinating Rhythm"



"Beep Beep"

**RICHARD DAVID TEMPLE**  
 November 14, 1943  
 Shelburne, Massachusetts  
 "Dick" drives a little green bug. Real accomplished pianist. Haunts Mr. Frude's room after school. "Oh, hogwash!"  
 College Preparatory: Chorus 4; French Club 4; The Arms Student 4; Band 1,2,3,4; J. V. Football 4; Student Council Representative 4, Publicity Editor 4.



**VALERIE ELISE TEMPLE**  
 January 6, 1943  
 Shattuckville, Massachusetts  
 "Val," "Temp" desires to own her own beauty shoppe. Really enjoys life. That Henry Jay is usually parked on 19 Haywood Street. "Anyone wanna go to Greenfield?"  
 Household Arts: Chorus 1,2,3; Sentinel 3; Senior Play; Betty Crocker Homemaker.



"Devil or Angel"

**JAMES EDWARD STURGEON**  
 November 7, 1943  
 Colrain, Massachusetts  
 "Sturge" Scapegoat of the Senior Class. Good at Math. Always has a devilish smile. "Ssst" Sturge did it!  
 General: Chorus 1; Varsity Baseball 3; J. V. Baseball 1,2; Class Treasurer 3.



**NELSON TETREAULT**  
 November 30, 1942  
 Buckland, Massachusetts  
 "Tate" Oh, that curly hair! Another hunter from Colrain. Ambition--to get out of school. Constant visitor in Shattuckville.  
 Vocational: J. V. Baseball 1,2; Art 1, Art Club 1, President 1.



"School Days Will Be Over"



"Five Feet High and Rising"

**JEAN ELIZABETH TAYLOR**  
 January 12, 1943  
 Shelburne, Massachusetts  
 "Jeannie With the Light Brown Hair." Thinking of a teaching career. Dependable. Little but ambitious. Avid fan of Harry Belafonte. Heavens, I don't wear my glasses in the DAYTIME!"  
 College Preparatory: Chorus 1,2,3,4; Band 1,2,3,4; French Club 2,4; Art Club 4; Future Teachers 2,3,4; Secretary 3; The Arms Student 2,3,4; Associate Editor 2,3; Editor-in-Chief 4; Silver A 3; National Honor Society 3,4; Treasurer 4; Class Vice-President 1; Student Council 1,4; Assistant Secretary 4; Hall Prize 2; N.C.T.E. Achievement Award.



**RICHARD MONO TRUESDELL**  
 August 14, 1942  
 Shelburne, Massachusetts  
 "Trues" added spark to our Senior Play. Crazy about cars. Wants to be a test-driver. "It's like this, Bud--"  
 General: Ticket Taker 1; Senior Play.



"I'm a Dreamer-Aren't We All"





GEORGE GORDON VANGUILDER  
March 2, 1943

Lynbrook, New York  
"Van" Science and math enthusiast. Terrific Arms debator. Likes to square dance. "Well, according to Einstein's theory--"  
College Preparatory: French Club 2; German Club 4; National Honor Society 2,3,4, President 4; Debate Club 2,3,4, President 4; Western Massachusetts Debate Club Tournament 4; Class President 2; Student Council 2; J. V. Baseball 1, 2; Senior Play; Merit Scholarship Letter of Commendation 4.



"Destination Moon"



JUDITH VINCENT  
August 7, 1943

Shelburne, Massachusetts  
"Vince" "Judi" An incessant talker. Likes to sing. A real comedian. A real chorus and band enthusiast. "Go away--you bug me!"  
Commercial: Chorus 1,2,3,4; Massachusetts Concert 4; The Arms Student 4; Band 3,4; J. V. Basketball 3; Sentinel 3; Ticket Taker 1,2; Senior Play.

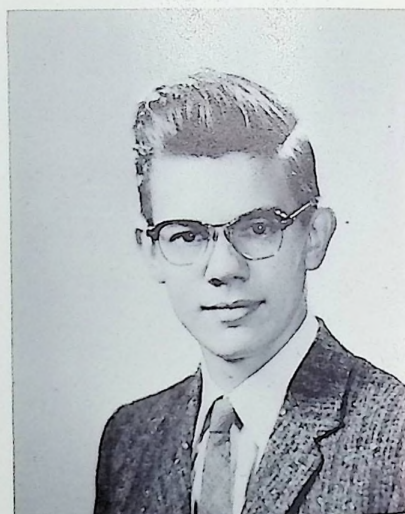


"Talk To Me"



JOSEPH WILLIAM WAGNER  
August 13, 1943

Springfield, Massachusetts  
"Joe" enjoys playing the banjo. Ambition is to be a farmer. Dislikes hard tests. "What--another test?"  
Vocational Agriculture: Future Farmers 3,4.



"Fifteen Cents Is All I Got"



WILLIAM THOMAS WALKER  
January 7, 1943

Shelburne, Massachusetts  
"Bill" can often be seen along Adamsville road. Loves cars, but dislikes people who don't understand him. "But I have to practice my trumpet at night because I don't have any other time free!"  
General: Band 1,2,3,4.



"Farewell Blues"



FRANCES RUTH WOODS  
April 18, 1943

Shelburne, Massachusetts  
"Finner's" one ambition is to be a physical education teacher. Real sportsman. Did you say nose little brothers?? Bound to be a success. "But, ma, I gotta buy a new pair of shoes!"  
General: French Club 4; The Arms Student 4; Future Teachers 2,3,4, Vice-President 2,4, President 3; Art 1,2; Art Club 1,2,3, Vice-President 3; Varsity Basketball 3,4; J. V. Basketball 1,2, Co-Captain 2; Varsity Softball 2; Varsity Field Hockey 2,3,4, Captain 2,4; Ticket Taker 1; Student Council Representative 3.



"Bran' New Shoes"

"Walk--Don't Run"

JOHN KINGSLEY WRIGHT

November 3, 1943  
Palm Beach, Florida

"Ugh" can usually talk his way in and out of almost anything. Flirt. Very active in school affairs. "You blundering idiot!"  
College Preparatory: Band 1,2,3,4; German Club 4, President 4; J. V. Football 4; J. V. Baseball 3; Varsity Basketball 3,4; J. V. Basketball 1,2; Class President 3; Boys' State 3; Student Council 3.



CHARLES ANTHONY YORK  
May 3, 1943

Shelburne, Massachusetts  
"Tony" also likes to square dance. Ambition is to become a paratrooper. One of Arms' outstanding Aggie boys. Mischievous eyes. "Who says so?"  
Vocational Agriculture: Future Farmers 1,2,3, 4, Reporter 2, Treasurer 3, Vice-President 4; Class Treasurer 4.



"Happy-Go-Lucky Me"



# SCHOOL DAYS.. SCHOOL DAYS



l. to r.: D. Mills, C. York, G. King, R. Truesdell, J. Elwell,  
V. Temple, G. VanGuilder, N. Johnson, S. Bray, A. Chasles,  
S. Caron, A. Green, E. O'Brien.

l. to r.: H. Field, J. Cromack, E. O'Brien, D. Mills.



P. Bond, M. Litchfield.



This page sponsored by the  
DAVENPORT LUMBER COMPANY

"DERFUL"

PARIS

S HERE TO

Music by GEL

hnicolor musical

American  
in Paris

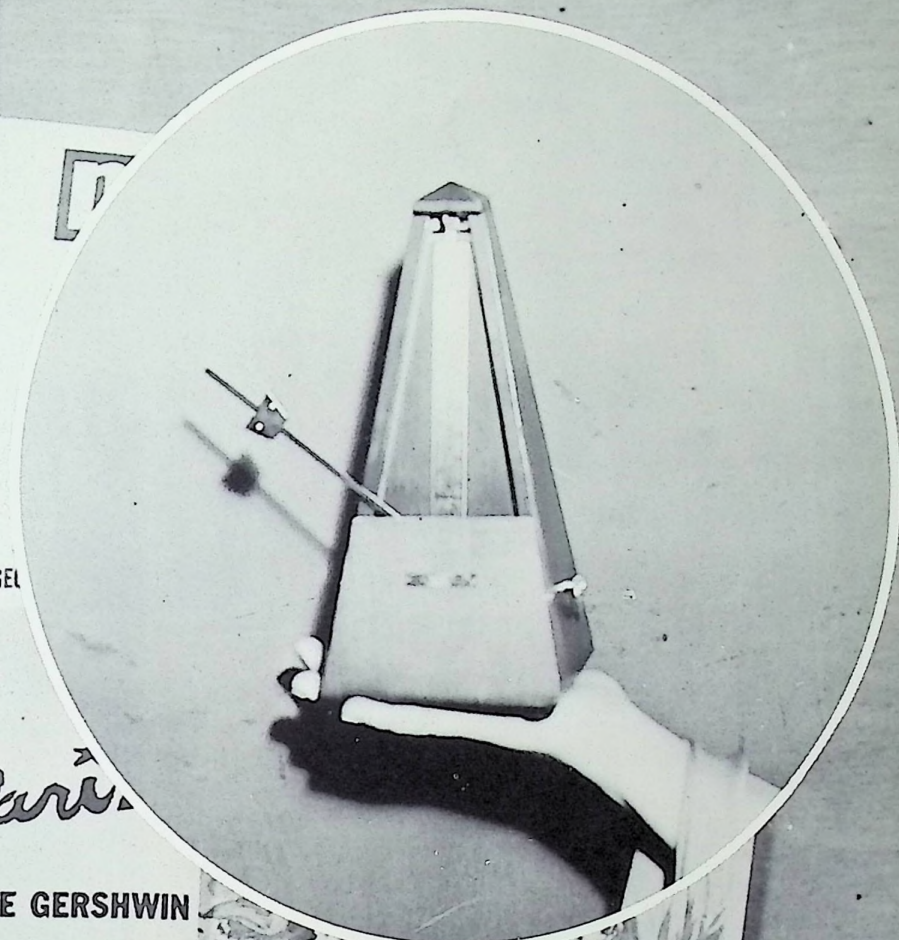
To the Music of  
GEORGE GERSHWIN

Starring GENE KELLY

and Introducing LESLIE CARON

with OSCAR

DEN



## UNDERCLASSES

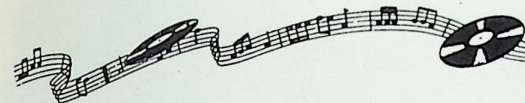




This page sponsored by your mail carrier RICHARD SHUMWAY, Rowe, and the W. E. MILLER GENERAL STORE, Griswoldville, Mass.

## Officers

N. Oxman, Secretary; D. Paye, Representative to Student Council; P. Hoyt, President; D. Kingsbury, Treasurer; R. Hale, Vice President.



"Take My Advice"



"I Want You to Know"



"We'll Get It!"

## THE JUNIOR CLASS

During their Junior year at Arms Academy, the students were met with many challenges. Among these were such courses as chemistry, Algebra II, French, shorthand, and U.S. History. Some of this year's junior boys were great assets to the school's athletic teams;

and many of the juniors contributed their abilities to activities such as the National Honor Society, Debate Club, and the Student Council. In this year the juniors realized that the Senior year and the choosing of careers and vocations are drawing near.



l. to r. first row: D. Wells, B. Packard, S. Spencer, A. Cutting, C. Purrington, L. Mollison, P. Demarais, N. Oxman, R. Hale, P. Hoyt, D. Kingsbury, D. Paye, Mr. Giffin, M. Garland, J. Aiken, D. Duprey, A. Looney, C. Babcock, P. Cetto; second row: B. Taylor, S. Miller, S. Wells, M. Upright, C. Booker, L. Kirsch, D. Pierce, A. Goldthwaite, B. Bates, F. Long, B. Stetson, P. Rowell, J. Boyd, S. Wilder, G. Sessions, M. Roberts, S. Herzig; third row: C. Wheeler, R. Gammell, J. Hoyt, A. Roberts, B. Herzig, M. Allen, C. DuBuque, R. Hopps, D. Quinn, B. Ormond, M. Truesdell, D. Smith, C. Koncal, L. Shippee, E. Purinton, R. Gates, M. Taylor; fourth row: D. Smithers, J. Andrews, W. McQuade, P. Crosier, J. Fish, J. Jacobs, R. Gilbert, L. Jarvis, F. Goodell, D. Thackeray, D. Jones, R. Wood, B. Desreuisseau; fifth row: B. Rowland, W. Bassett, C. Tanguay, H. Clark, J. Hoyt.

This page sponsored by the  
BURNT HILL FARM





This page sponsored by CONNIE'S MARKET, Monroe Bridge, and I. KRAMER AND SONS, INC.

## Officers

l. to r.: J. Roberts, Treasurer; R. Fischlein, Vice President; E. Reagey, President; J. King, Representative to Student Council; M. Goodell, Secretary.

## THE SOPHOMORE CLASS

During its Sophomore year at Arms Academy, the Class of 1963 took its place among the upper classmen. It contributed to Booster Day with a very attractive float and had its share of students on both the athletic

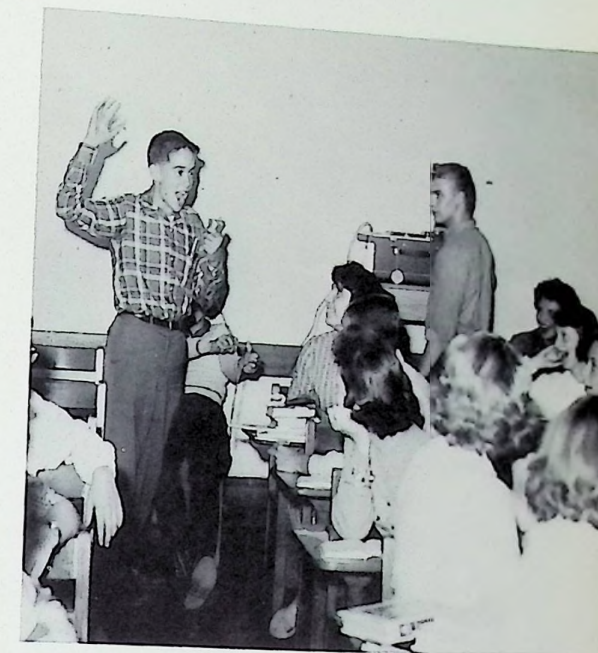
and scholastic line-ups of stars. Five good officers were elected to head the Sophomore Class, and they have served their classmates well. All now look forward to two more pleasant years at Arms!



"I'll Get By"



"After School"



"Listen to Me"

l. to r. first row: G. Streeter, S. Shippee, J. Green, E. Krug, S. Shearer, A. Scott, Mr. Scott, J. King, J. Roberts, E. Reagey, R. Fischlein, M. Goodell, Mrs. Thorn, M. Little, J. Call, L. Bellor, D. Harris, P. Rowell; second row: N. O'Brien, D. Donelson, C. Gray, J. Booth, L. Garland, J. Temple, P. Roberts, G. Mirick, S. Carr, D. Aiken, J. Churchill, P. Prothero, L. Noyes, B. Gould, C. Jarvis, P. Boyd; third row: G. Alden, J. Allen, D. Beatty, S. Hale, K. Mills, G. Harris, G. Brown, S. Dole, B. Clark, P. Metaxas, S. Coburn, C. Sommers, M. Rainville, H. Lively, R. Jasmin, R. Lynde, H. Booker; fourth row: R. Lively, W. Hathaway, G. Stetson, R. Bishop, A. Cress, D. Churchill; fifth row: R. Spencer, L. Dumas, P. Wagner, M. Caron, T. Amnott, R. Lawless, P. Rowell, P. Patterson, D. Dassatti, G. Wells, M. Kelleher, W. Ovitt, T. Howes, J. Gilbert, C. Caron.

This page sponsored by the GREENFIELD MOUNTAIN MOTEL, Greenfield.





This page sponsored by SHARBY'S  
MOHAWK T. V., Shelburne, and  
PURINTON SERVICE STATION,  
Charlemont, Mass.

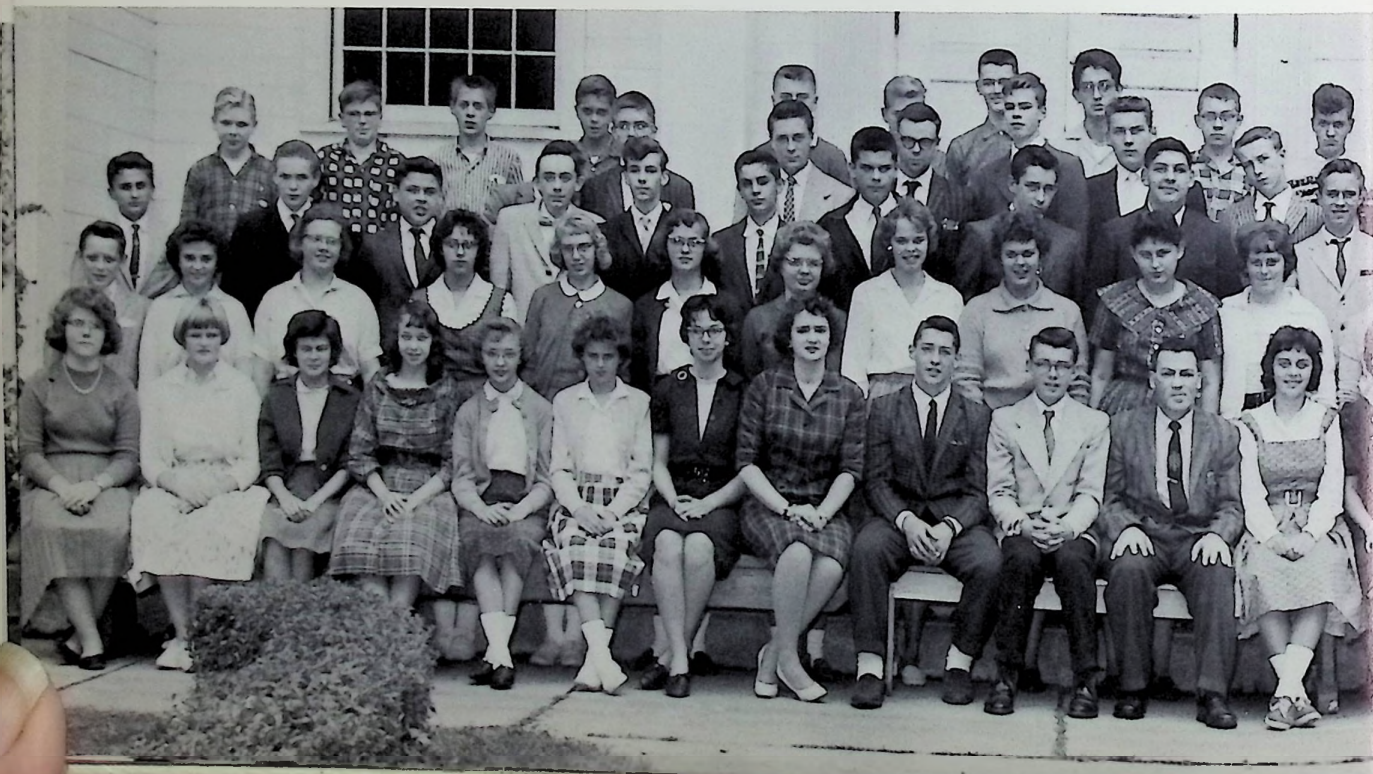
## Officers

l. to r. M. Maloney, Secretary; K. Shulda, Representative to Student Council; W. Goff, President; D. Rancourt, Vice President; D. McKinnon, Treasurer.

## THE FRESHMAN CLASS

During their first year at Arms Academy, the members of the Freshman class were introduced to many new happenings. Their school activities were harder and their homework hours longer than they had previously been. But in addition to this, the new world

of high school with all its rewarding adventures and fun was theirs. Now the freshmen have concluded their first year in high school and anticipate their second when they will become upperclassmen.



"School Days"



"Lunch Hour"

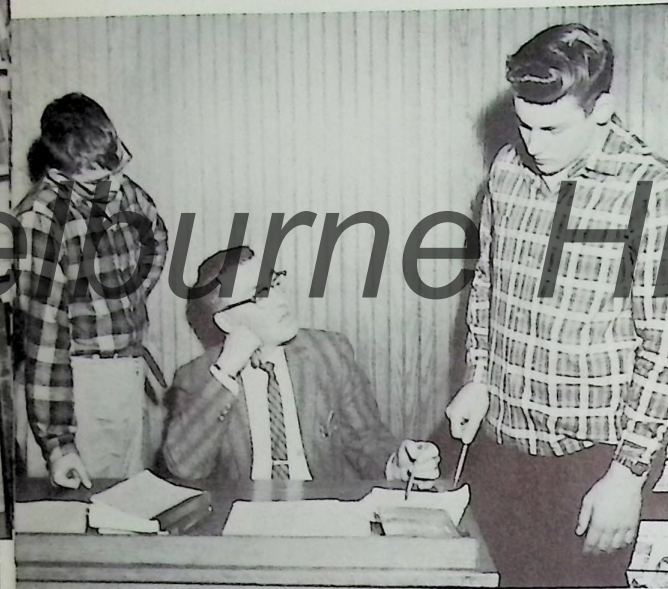
l. to r. D. Roberts, M. Purrington, J. Tatro, M. Rice, J. Abbott, L. Gould, K. Shulda, Miss Saunders, D. Rancourt, W. Goff, Mr. Merritt, M. Maloney, D. McKinnon, J. Miller, S. Crofton, K. Elwell, S. Garland, R. Herzig, J. Crocker; second row: W. Rosenberg, P. Fairbanks, R. Sherman, C. Smith, B. Churchill, K. Root, D. Stroheker, N. Spencer, B. Doneilo, R. Murdock, P. Purinton, G. Traquair, M. Truesdell, J. Stroheker, P. Gover, C. Flewelling, J. Palmeri; third row: R. Phillips, B. Wilde, R. Miller, F. Supprise, P. Crosier, H. Crowningshield, D. Gates, B. Bird, D. Aitken, R. Cross, J. Alden, G. Cromack, R. Scott, W. Amstein; fourth row: A. Bjork, C. Cromack, L. Barcomb, J. Herron, G. Hall, S. Peabody, D. Woods; fifth row: G. Kinsey, F. Trow, D. Clark, D. Shearer, P. Mead, W. Gilbert, P. Schulze, G. Streeter, F. Scott, C. Sherman, E. Kelley, D. Clark, M. Caron, R. Spencer.

This page sponsored by RALPH  
CROSIER, Griswoldville.





## UNDERCLASS



"It Was There All the Time"



"Dreamsville"

## Candid's



"Nimble Fingers"

This page sponsored by SHELBURNE FALLS  
FARM EQUIPMENT CO.

STEADY  
Music by JIMMY McHUGH

ONDERFUL

OF PARIS  
Music by MARGUERITE MONNOT

VE IS HERE  
by IRA GERSHWIN

Technicolor musical

An American in Paris

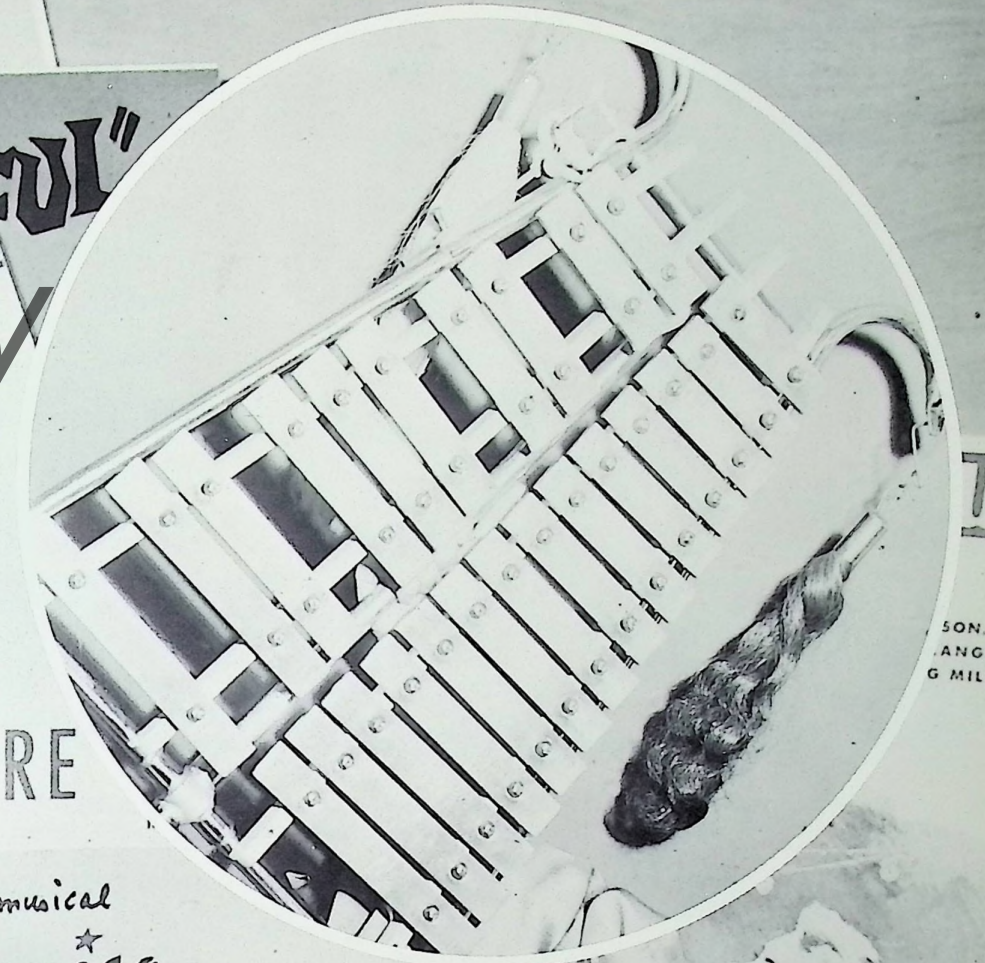
To the Music of  
GEORGE GERSHWIN

Starring GENE KELLY

and Introducing LESLIE CARON  
with OSCAR

DEN

# ORGANIZATIONS



SON.  
ANGE  
G MILLS







1. to r. first row: J. Stanley, J. Taylor, G. Van Guilder, S. Bray, J. Gould, L. Shippee, N. Oxman; second row: L. Laffond, D. Jones, S. Caron, D. Alden, S.

Coombs, M. Roberts, M. Allen, B. Herzig, S. Miller, L. Kirsch, R. Hopps, C. DuBuque, D. Paye, D. Kingsbury, P. Hoyt, M. Upright, C. Purrington.

## NATIONAL HONOR SOCIETY



In June of 1959 the Arms Academy Chapter of the National Honor Society of Secondary Schools was started. The Ashfield Chapter held the first induction service at which eight members were transferred from the Pro Merito Society and eight sophomores were taken in. The following year in April twelve sophomores were chosen, and in June one senior and two more sophomores were selected. All sophomores, juniors, and seniors with at least a "B" average and character qualifications are eligible.

This page sponsored by STANLEY CUMMINGS.

## STUDENT COUNCIL



1. to r. J. Taylor, Assistant Secretary; J. King, Secretary; E. O'Brien, President, R. Phillips, Vice President; S. Bray, Treasurer.



The Student Council is a group of representatives from the student body organized "to foster proper school spirit, to work for a neat, orderly school building, to stand for fairness in all school activities, to boost all organizations of the school." In carrying out this pur-

pose, the members have obtained among other things emblems for the National Honor Society and the band and towels for gym. They have also made available athletic and scholarship awards and sponsored several assembly programs.



1. to r. first row: J. King, R. Phillips, E. O'Brien, S. Bray; second row: J. Taylor, R. Hale, K. Shulda, W.

Goff, E. Reagey, R. Fischlein, P. Hoyt, R. Temple, D. Rancourt, D. Paye.

This page sponsored by JOHN H. WILLIAMS, JR., your Aetna Insurance Agent.



# THE *Arms Student* STAFF



J. Crocker  
Assistant Editor



Mrs. Haller  
Advisor



J. Taylor  
Editor-in-Chief



1. to r., first row: B. Herzig, J. Crocker, J. Taylor, R. Hopps. second row: J. Green, A. Scott, D. Mills, P. Metaxas, S. Bray, C. Abbott, R. Hale. third row: S. Caron, J. Elwell, M. Litchfield, J. Call.

This page sponsored by HARRISON RAYMOND AND SON, Charlemont



1. to r.: S. Brown, J. Gould, D. Alden, F. Woods.



A. Chasles, Business Manager

## CREATING A BOOK OF MEMORIES

1. to r., first row: L. Shippee, N. Johnson, C. Hoyt, D. Ball. second row: M. Fiske, D. Alden, V. Temple, B. Taylor. third row: J. King, G. Mirick, J. Vincent.





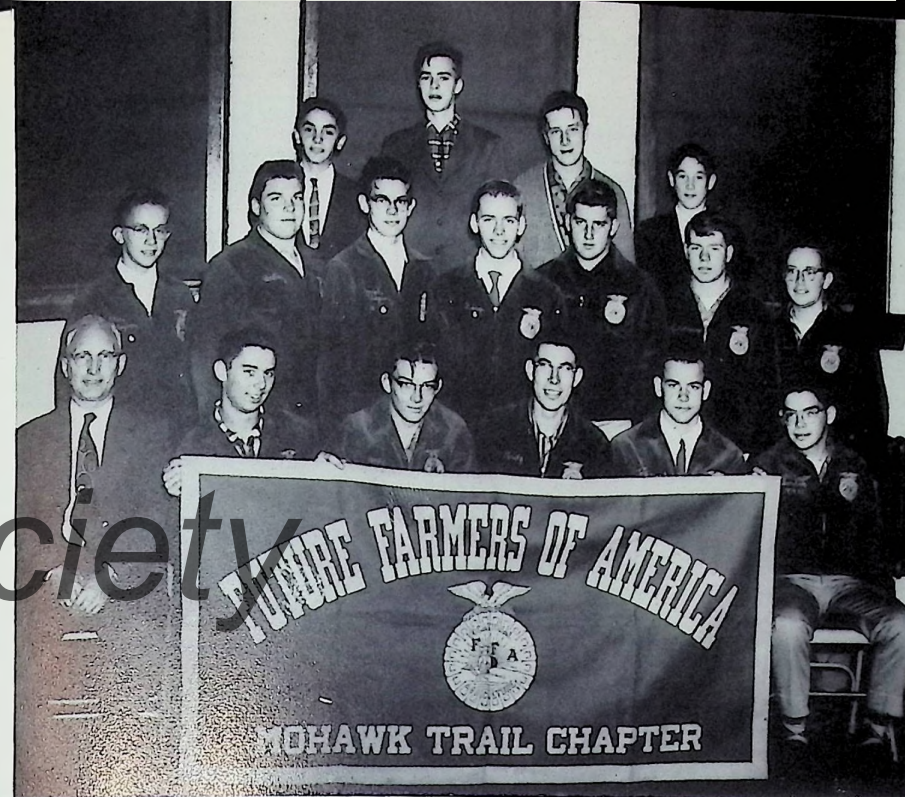


l. to r.: first row: N. Johnson, S. Bray, D. Mills; second row: A. Scott, M. Upright, P. Hoyt, E. O'Brien, D. Kingsbury, L. Kirsch.

## THE SENTINEL

Two years ago publication of the Arms Sentinel was renewed after a lapse of three years. Susan Bray, editor, with Donna Mills as her assistant, headed the staff of students who put out the news sheet. Reports of the various activities of the school organizations and athletic teams have been written under Mrs. Davenport's guidance. Selected stories, poems, and articles by the students have also been used to add interest.

S. Bray - Editor



l. to r. first row:  
Mr. Giffin  
H. Lively  
C. Wheeler  
L. Lively  
C. York  
M. Taylor

Second row:  
P. Wagner  
P. Rowell  
J. Wagner  
G. Harris  
S. Dole  
W. Hathaway  
A. Cress

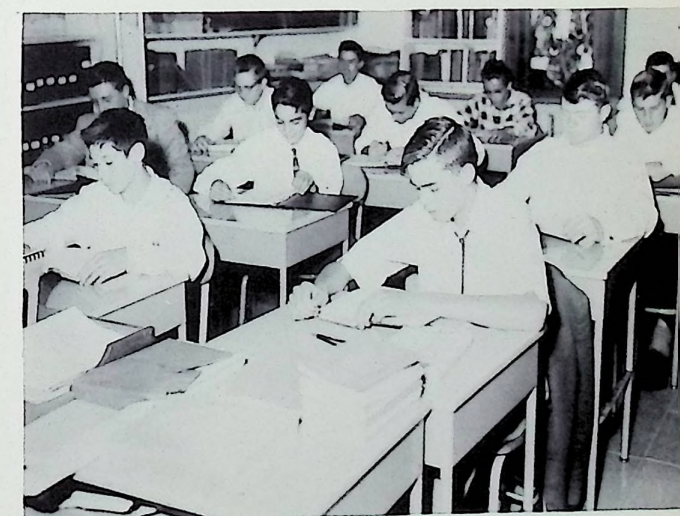
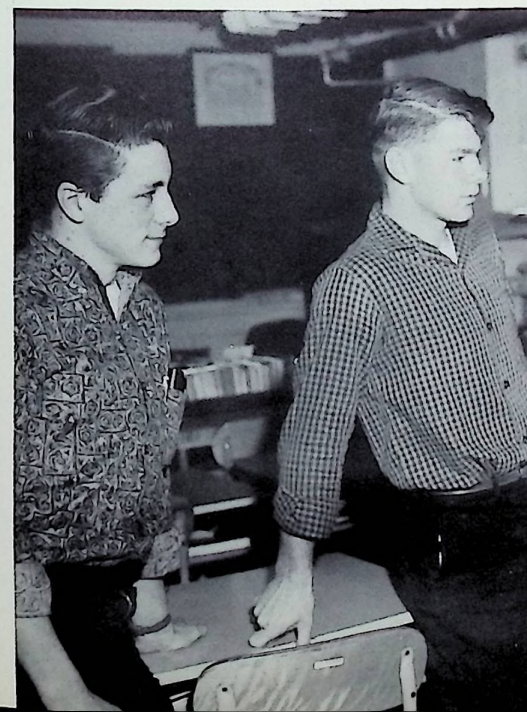
Third row:  
H. Crowningshield  
J. Herron  
C. Cromack  
D. Clark

## FUTURE FARMERS OF AMERICA

As one of Arms Academy's most active and successful groups, the 1960 Future Farmers of America sought to develop competent, aggressive, rural, and agricultural leadership and to create more interest in the intelligent choice of farming occupations. Following in the true tradition of Arms leadership, this year's Future Farmers won first place in a livestock and in

a dairy judging contest in Amherst and also sent two members to Kansas City to learn more about the many phases of farming. In face of this outstanding progress, we all know in the years to come the Arms Future Farmers of America will continue to teach young men the right road to skillful farming.

C. Cromack, W. Hathaway



l. to r. first row: D. Clark, J. Herron; second row: C. Cromack, H. Crowningshield, W. Hathaway; third row: A. Cress, G. Harris, S. Dole; fourth row: H. Lively, P. Wagner, P. Rowell.



## CAREERS ARE BEGUN

### F.N.A.

A new extra-curricular activity, the Future Nurses of America Club, was added to Arms Academy this year. Under the guidance of Mrs. Cutting and Mr. Nelson, several meetings have been held, and outside activities planned. In December, the junior and senior members of the Future Nurses Club visited Elliot Hospital in Keene, New Hampshire, and Crotched Mountain Rehabilitation Center in Greenfield, New Hampshire, as part of the program to gain insight into the nursing profession.

### F.T.A.

The Future Teachers of America, under the guidance of Mr. Nelson, has been active all year visiting schools and colleges to observe good teaching. Following an impressive induction ceremony in assembly, the club held two meetings monthly. Since teachers will always be needed, the F.T.A. is important in training students in good attitudes toward the profession.

#### F. N. A.

l. to r.; first row: N. Mitchell, D. Mills, S. Bray; second row: L. Mollison, J. Abbott, P. Boyd, J. Stroheker; third row: L. Noyes, C. Booker, K. Shulda, R. Hopps.



#### F. T. A.

l. to r.; first row: Mr. Nelson, C. Purrington, J. Crocker, N. Johnson, F. Woods, J. Taylor, B. Quinn; second row: D. Ball, A. Looney, P. Bond, C. DuBuque, S. Miller, A. Cutting, M. Rice; third row: L. Barcomb, G. Mirick, C. Gray, D. Roberts, G. Alden.



## .....TALENTS DEVELOPED

### DEBATE CLUB

Logical thinking and alertness were needed by the members of the Debate Club this year. The topic—whether the power of the United Nations should be significantly strengthened—was especially challenging. After much research and practice under Mr. Scott's guidance, the teams met and debated with the other schools in the Connecticut Valley League.

### ART CLUB

The Arms Academy Art Club through the year made commendable efforts to take an active part in the school's extra-curricular program. The enthusiastic members prepared a mural for Thanksgiving and a display for Christmas in the Cafeteria. For the first time in the club's history, persons who did not have time to take the art courses were encouraged to join the club.

#### DEBATE CLUB

l. to r. first row: G. Van Guilder, L. Herzig, A. Green, J. Wagner; second row: Mr. Scott, A. Roberts, J. Jacobs, A. Scott, R. Cross, L. Barcomb, R. Hale.



#### ART CLUB

l. to r. first row: J. Crocker, L. Herzig, P. Metaxas; second row: N. Spencer, S. Wilder, A. Carter; third row: B. Bates, P. Crosier; fourth row: J. Crocker, D. McKinnon, Mr. Shea.







1. to r. first row: J. Call, A. Scott, C. Jarvis, C. Purrington, M. Upright, M. Litchfield, J. Green, B. Bates, B. Herzig; second row: B. Quinn, J. Taylor, J. Crocker, P. Bond, N. Oxman, J. Booth, D. Smith, J. King; third row: N. Johnson, S. Bray, S. Carr, C. Booker, S. Miller,

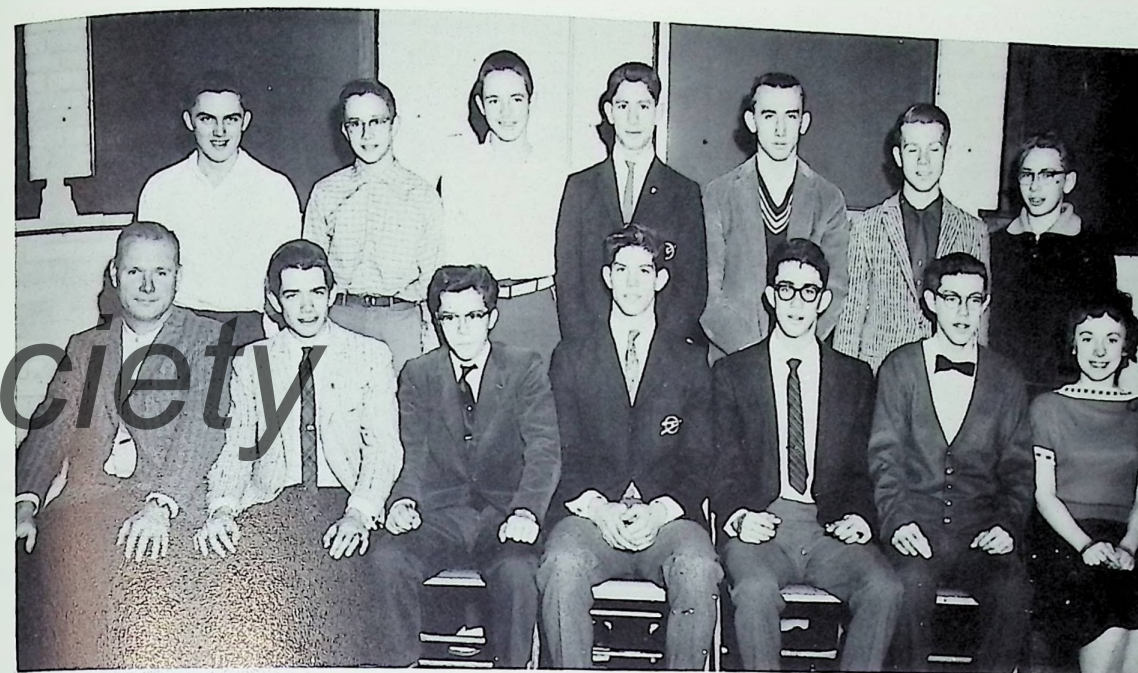
C. DuBuque, P. Metaxas, R. Hopps, L. Kirsch, M. Allen, F. Woods, D. Donelson, D. Mills; fourth row: D. Kingsbury, L. Jarvis, J. Fish, D. Smithers, J. Cronack, J. Hoyt, E. O'Brien, C. Halberg, W. Thackeray, W. McQuade, H. Field, R. Temple, W. Pollard.

## FRENCH CLUB

Le Cercle Francais, Arms Academy's French club, has helped to improve the students' knowledge of the history, folklore, and customs of France. Although all French students are not members of the club, each

French class participated in programs for the monthly club meetings. This very active club, open to all students who have studied French, provides an entertaining application of the French language.

1. to r. A. Chasles, N. Johnson, J. Crocker, D. Smith.



1. to r. first row: Mr. Nelson, D. Jones, G. Alden, J. Wright, J. Jacobs, T. Howes, L. Herzig; second row: R. Gates, P. Wagner, F. Goodell, P. Hoyt, J. Andrews, G. Van Guilder, R. Hale.

## GERMAN CLUB

The German Club has been a new organization at Arms this year. The group, which met every third week, bought pins bearing a German insignia. The students and faculty all enjoyed the German carols which the members sang at the Christmas assembly. During the year the club attended a German movie and also had several people speak about and show slides of Germany.

J. Jacobs, J. Wright, Mr. Nelson

This page sponsored by HALBERG'S MARKET, Shelburne Falls, and TURNBULL'S SUNNY FARMS, Greenfield, Mass.







l. to r. C. Gray, A. Scott, P. Metaxas, J. Call, K. Shulda, J. Green, D. Pierce, N. Oxman, C. DuBuque.

## DRAMATIC CLUB

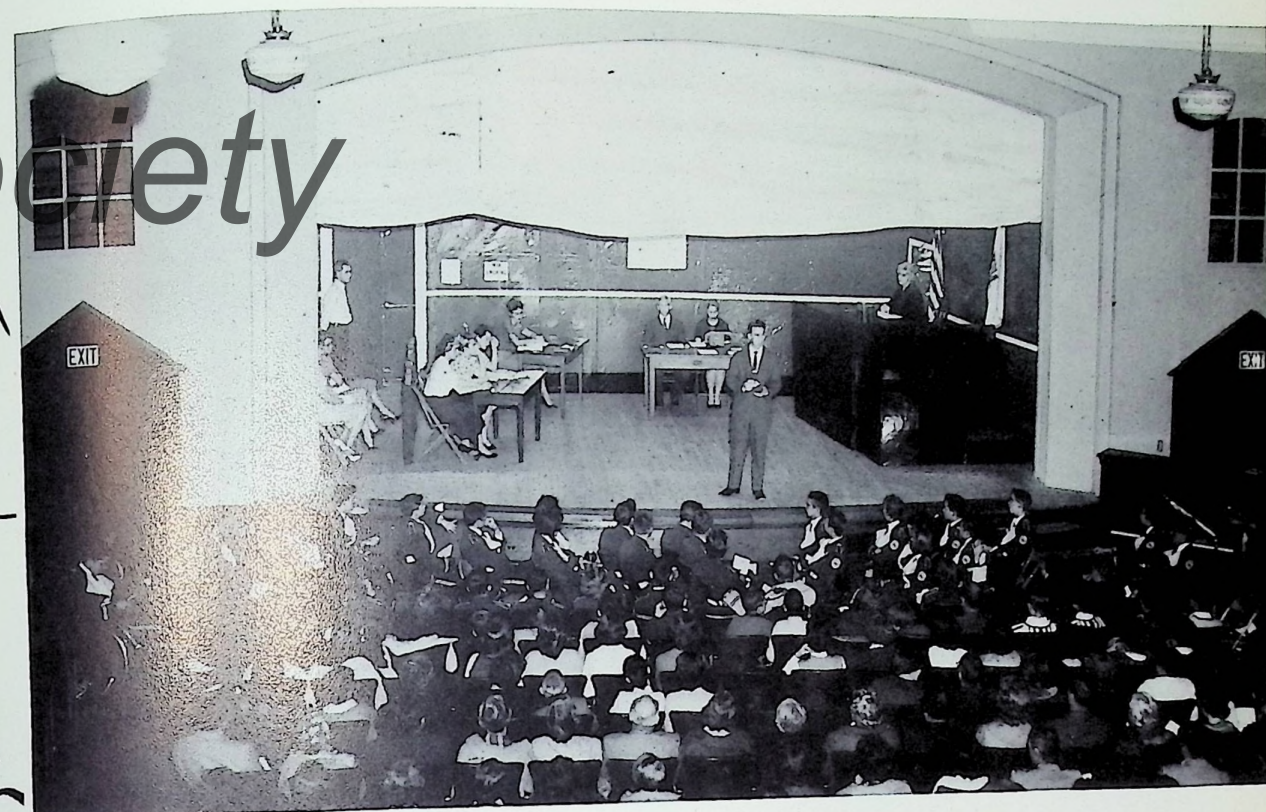


l. to r. D. Pierce, C. DuBuque, N. Oxman

A Christmas pageant and other seasonal plays have been given to arouse interest in the Dramatic Club. The club's main aim has been to develop appreciation in the field of dramatics. Other objectives have been practice in giving dramatic readings, use of gestures while acting, and the acquisition of the knowledge and the understanding of different types of plays. Although the club is only two years old, it has become an active part of the Arms Academy extra-curricular program.

This page sponsored by THE WELDON HOTEL.

## THE SENIORS PRESENT



"And now, ladies and gentlemen of the jury, my final speech will be . . ."

## You the Jury

### CAST

Allen Woodard . . . . .	Gordon Van Guilder
Edith Scott . . . . .	Noreen Johnson
Miss Carver . . . . .	Diane Ball
Clerk of Court . . . . .	Arthur Green
Court Stenographer . . . . .	Patricia Bond
Bailiff . . . . .	Charles York
Barbara Scott . . . . .	Sandra Caron
Mrs. Lake . . . . .	Donna Mills
Judge Margaret Findley . . . . .	Susan Bray
Robert McPherson . . . . .	Ethan O'Brien
Lewis Rennie . . . . .	Gregory King
Gwendolyn Kelton . . . . .	Valerie Temple
Sheila Vincent . . . . .	Aline Chasles
Janice Scott . . . . .	Judith Elwell
Jimmy Perry . . . . .	Richard Truesdell

This page sponsored by ROSE'S DRIVE-IN.



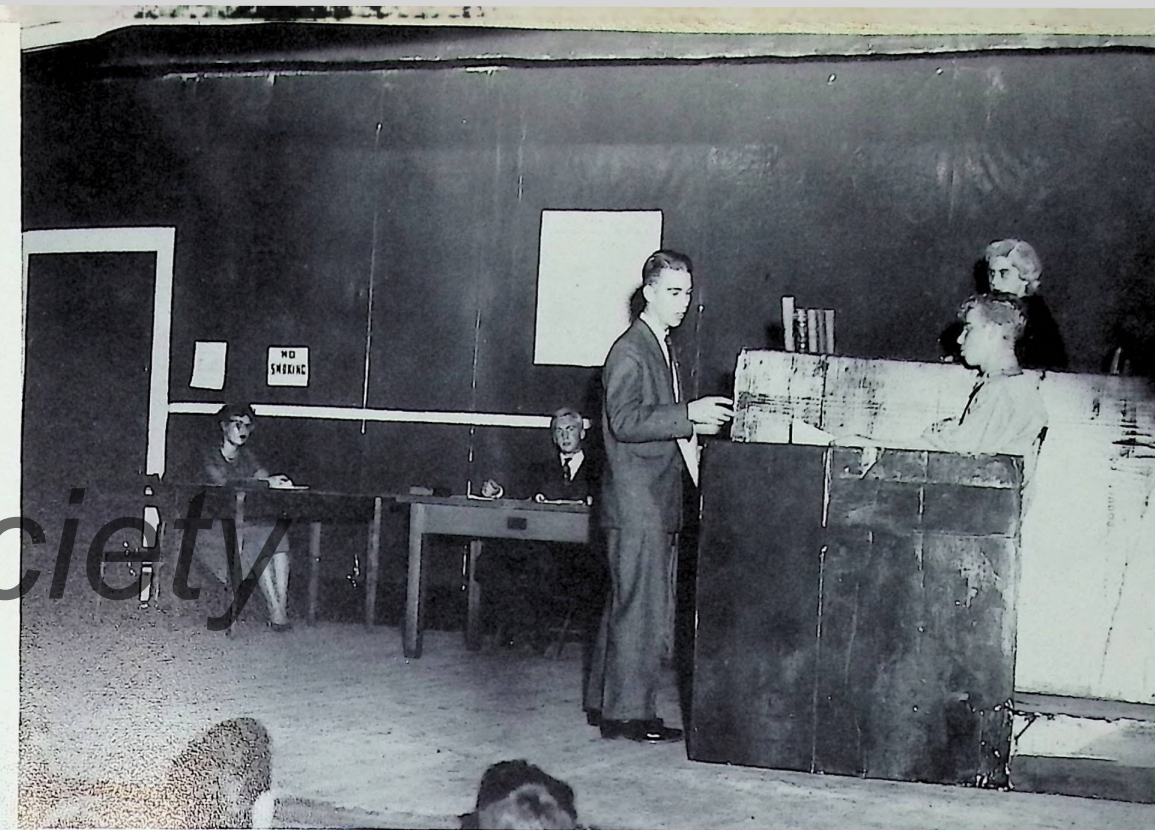
# Behind THE SCENES...

## Shelburne Historical Society

"A little more under here."

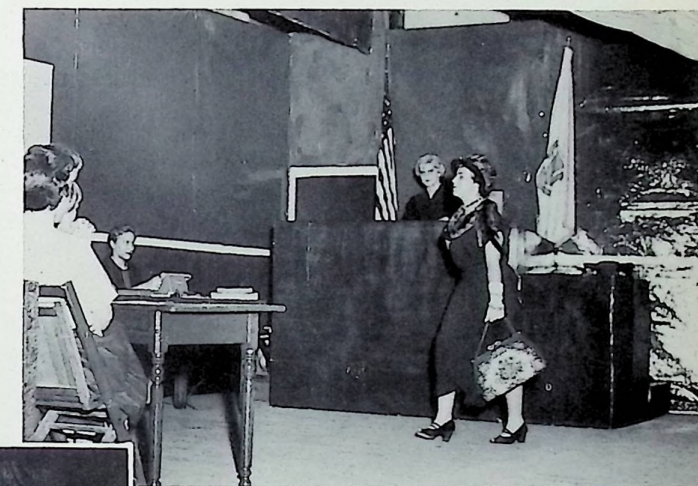


"Gee, don't put that stuff on me!"

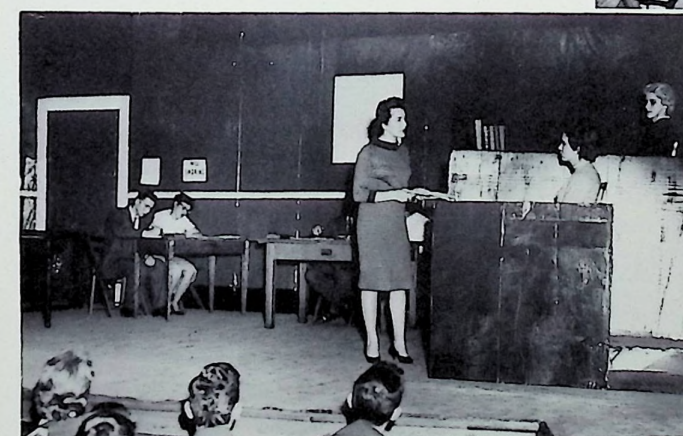


"Now, Mr. McPherson, you are a police officer of this county?"

# then... OPENING NIGHT



"Well, I never thought I'd get off this easy!"



"At what time did you arrive at the apartment?"





l. to r. first row: D. Harris, M. Maloney, K. Elwell, S. Crofton, S. Shippee, J. Taylor, C. Abbott, S. Caron, B. Churchill, M. Little, C. Sommers, A. Scott, J. Miller, D. Duprey, J. Green, S. Spencer, P. Fairbanks, M. Purington; second row: J. Crocker, V. Temple, J. Elwell, D. Mills, J. Churchill, M. Fischlein, B. Quinn, D. Platner, D. Roberts, N. Mitchell, L. Shippee, B. Packard, J. Carpenter, J. Aiken, M. Litchfield, C. Purington, J. Booth; third row: J. Stanley, B. O'Dell, J. Abbott, M. Rice, G. Streeter, S. Bray, K. Shulda, G. Mirick, B.

Grogan, D. Ball, J. Vincent, G. Gilbert, M. Truesdell, N. Spencer, D. McKinnon, S. Coburn, D. Smith, B. Clark, R. Hopps, D. Quinn, M. Garland, B. Donello, G. Traquair, P. Boyd, M. Upright, A. Cutting, J. King; fourth row: J. Gould, B. Gould, C. Jarvis, M. Wainville, T. Howes, K. Mills, R. Temple, J. Jacobs, M. Allen, S. Carr, L. Kirsch, R. Amnott, M. Fiske, C. Booker, C. Koncal, A. Bjork, D. Paye, G. Brown, A. Green, D. Aitken, E. Kelley, F. Long, J. Call, A. Clark.

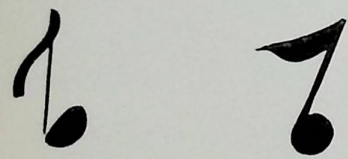


## CHORUS



The chorus this year, patiently directed by Mr. Smithers and accompanied by John Jacobs and Richard Temple, gave a fine exhibition of musical talent at its annual Spring Concert. In

addition, this year, three seniors - Joyce Carpenter, Barbara Grogan, and Judith Vincent - represented Arms Academy at the Western Massachusetts District Chorus in Athol.



Our Accompanists  
John Jacobs and Richard Temple



l. to r. first row: L. Herzig, G. Call, R. Temple, D. Mills, S. Bray, S. Coombs, S. Brown, B. Quinn; second row: M. Purington, G. Alden, W. Amstein, R. Eastman, D. Kingsburg, G. Van Guilder, R. Cross, L. Gould; third row: M. Little, C. Jarvis, B. Ormond, D. Donelson, E. Reagey, P. Metaxas, P. Hoyt, B. Herzig, R. Hale, C. Sommers, P. Roberts.

## MAGAZINE DRIVE

The 1960 Arms Academy Magazine Drive was highly successful totaling well over the anticipated three thousand dollars. The drive began with a kick-off assembly emceed by Hal Rood, a representative of the Curtis Publications Company. The combined, persevering efforts of the student body resulted in ten high salesmen and many other winners. The chief purpose of the drive was not only to raise money but to develop confidence and poise in each student through his efforts to sell magazines.



Our Top Magazine Salesman  
Martha Little

## DRIVER EDUCATION

Under the able direction of Mr. Palmeri, students are instructed in the driver education course. If we don't become a credit to the highways, it is not because we have not had ample classroom study as well as actual experience.

l. to r. front seat: Mr. Palmeri, J. Taylor; back seat: P. Bond, L. Shippee, B. O'Dell.





## THE SILVER

Students of Arms Academy who receive the Silver "A" are indeed proud to be chosen for this honor. Selected for their "outstanding sportsmanship", they also have the qualifications listed below. Everyone is eligible

for the award, as stated on posters scattered throughout the school. All students would like to wear the Silver "A" and be worthy representatives of Arms Academy.

LOYALTY ATTITUDE CHARACTER  
DISPOSITION CO-OPERATION



Front row l. to r. A. Chasles, D. Mills, J. Taylor.  
Back row l. to r. R. Hale, A. Scott, M. Goodell, M. Allen, C. Purrington, M. Roberts, W. Pollard.

This page sponsored by HOYT'S AUTOMATIC  
LAUNDRY, Shelburne Falls

SO STEADY  
Music by JIMMY McHUGH

"WONDERFUL"  
Music by MARGUERITE MONNOT

LOVE IS HER  
by IRA GERSHWIN

G.M. Technicolor musical

An American in Paris

To the Music of  
GEORGE GERSHWIN

Starring GENE KELLY

and Introducing LESLIE CARON  
with OSCAR

FEATURES





# BOOSTER DAY

Booster Day Parade



Coin toss



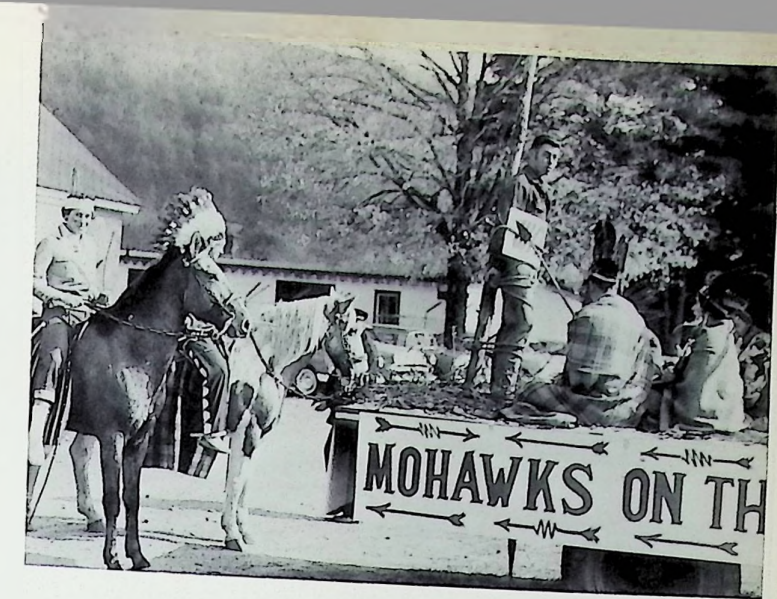
Malah Allen



l. to r. J. Stanley, D. McKinnon, L. Garland, S. Looney, Mrs. Looney.

This page sponsored by A-LIBER'S, Greenfield.

Malah Allen was crowned Queen; and Joyce Stanley, Linda Garland, and Donna McKinnon were named to her court at a Booster Day rally held on Friday, October 21, 1960. Despite the frosty autumn weather, buoyant spirits dominated both the rally and the big game the next day. Although Arms was overpowered by Ware, our team displayed a tremendous improvement and a gallant show of typical Arms Academy spirit. At night, a Booster Day dance brought to an end the exciting events.



Junior Class Float



"Roll On To Victory"



Sophomore Class Float

This page sponsored by ADLER'S MOHAWK MOTOR COURT and LUELLA McCLOUD, Antique Shop, Ashfield Road.



## FANTASY IN WHITE

The most important winter event of 1960, the Senior Prom, was called "Fantasy in White". Dressed in a snowy satin gown with a scarlet rose on the skirt, Aline Chasles was the queen of the dance. Chosen to reign in her court were Joyce Stanley and Joan Crocker. All who attended this gala affair agreed it was the perfect prelude to joyous holidays.



"Sittin' It Out"



"Dancing in the Dark"



"Here Comes Santa Claus"



l. to r.: F. Clark, J. Crocker, A. Chasles, G. King, J. Stanley, G. Root.

Aline Chasles--Our Queen



"Dance the Night Away"



This page sponsored by  
JAMES E. CLEARY, JEWELER, Greenfield.





l. to r. R. Patenaude, D. Alden, E. Pulaski, L. Shippee, S. Wells, J. Wright.

## JUNIOR PROM

A multitude of paper roses and a big yellow moon carried out the "Moonlight and Roses" theme of the Junior Prom. Dancers swirled around a flower-adorned wishing well to the music of Don Tepper's orchestra. Lane Shippee, escorted by Ed Pulaski, was chosen queen, and sat on the garden seat of honor. Donna Alden, Sandra Wells, and their escorts were selected for the Court.

l. to r. J. Crocker, F. Clark, J. Taylor, R. Truesdell.



l. to r. E. Pulaski, L. Shippee, K. Coburn.



l. to r. D. Alden, R. Patenaude, J. Cromack, M. Litchfield, F. Woods, P. Purrington, P. Bond, J. Crocker, F. Clark, M. Fischlein, W. La-Belle.



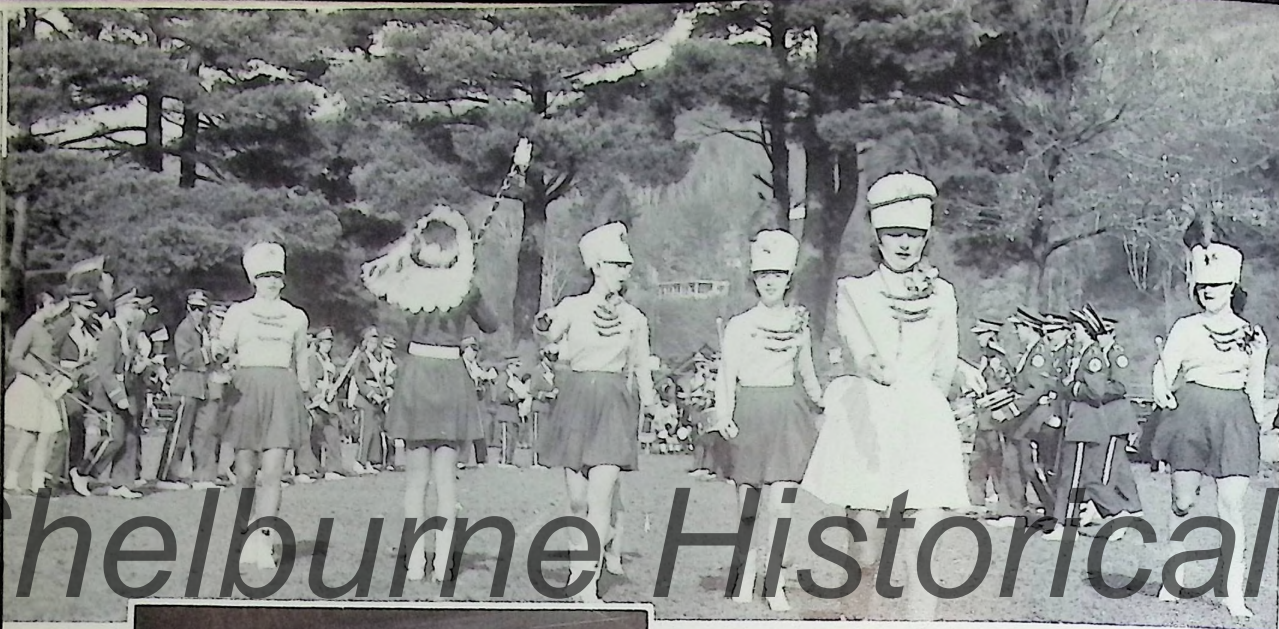
l. to r. M. Litchfield, J. Cromack, D. Mills, R. Hall.



l. to r. A. Chasles, D. Mills.



# Shelburne Historical Society



"Marching Saints"

## ACTIVITY ROUND-UP



"Junior Prom"



"Here We Go Again"



"Queen of the Day"

This page sponsored by  
LESLIE R. ORMOND

STEADY  
Music by JIMMY McHUGH

WONDERFUL

PARIS  
by MARQUERITE MONNET

IS HERE TO  
MUSICAL

Technicolor musical  
An American  
in Paris

To the Music of  
GEORGE GERS.

Starring GENE KELLY

and Introducing LESLIE CARON  
with OSCAR

DEN



## ATHLETICS



# FOOTBALL

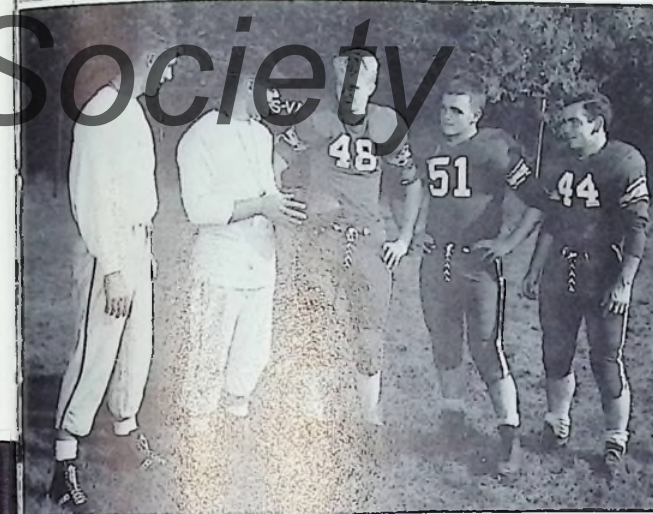
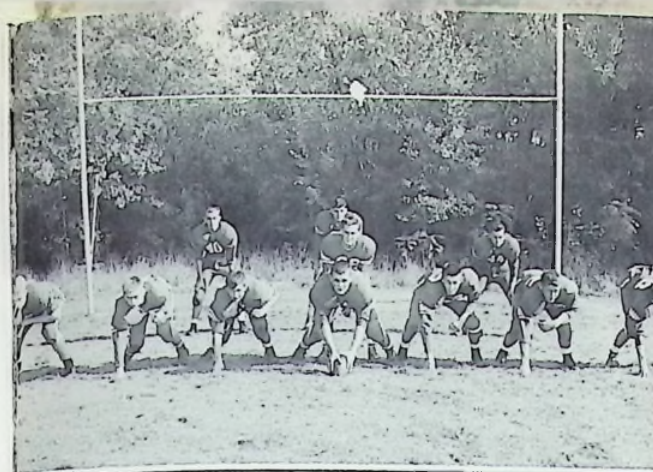
W. Pollard



## SCOREBOARD

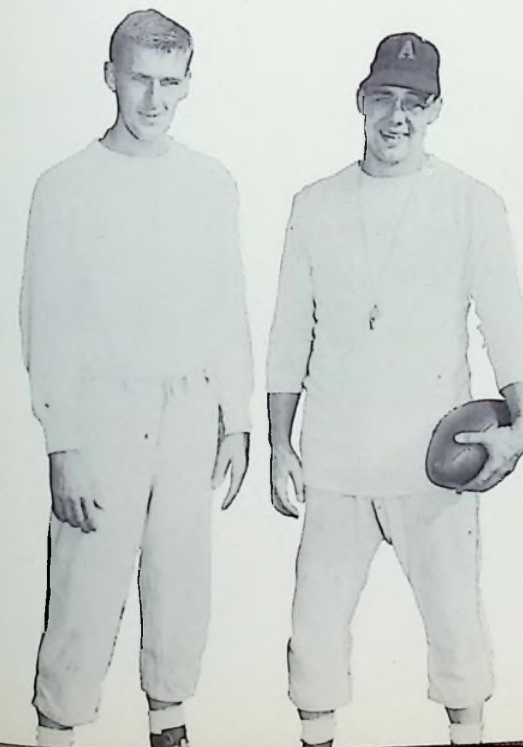
Arms	12	Frontier	14
Arms	0	Williamstown	20
Arms	0	Amherst	42
Arms	6	Ludlow	35
Arms	14	Ware	28
Arms	0	South Hadley	22
Arms	12	Mahar	18
Arms	6	Murdock	30

The football games highlighted the activities of the fall season. Some of these games proved to be very close and exciting, holding our interest from the starting kick-off right up to the final whistle. Because of the team's faithful and diligent practice, the spectators witnessed a vast improvement during the season which gave us hope of a winning team next year.



Coach MacLeod, Coach Piehl, E. O'Brien, G. King, W. Pollard.

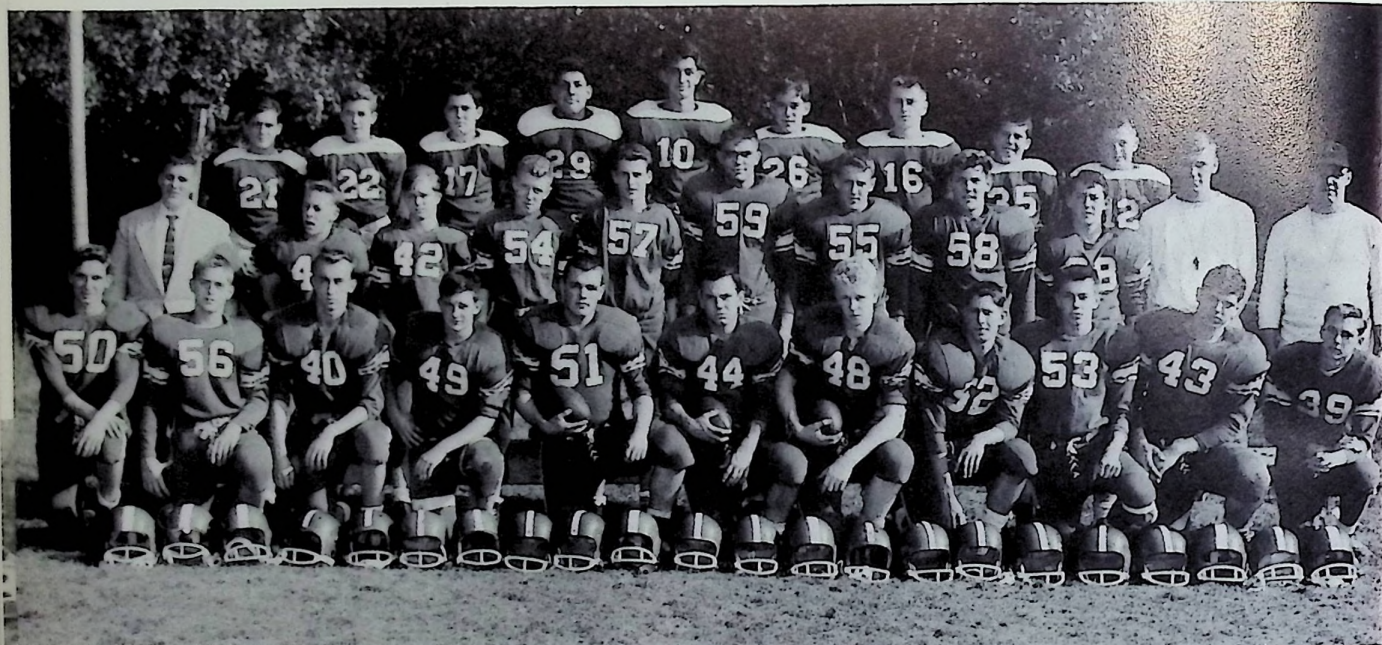
Coach MacLeod, Coach Piehl



1. to r. first row: E. O'Brien, J. Allen, R. Gammell, G. King, J. Fish, E. Reagey, P. Hoyt; second row: H. Andrews, J. Hoyt, W. Pollard; Third row: R. Fischlein.

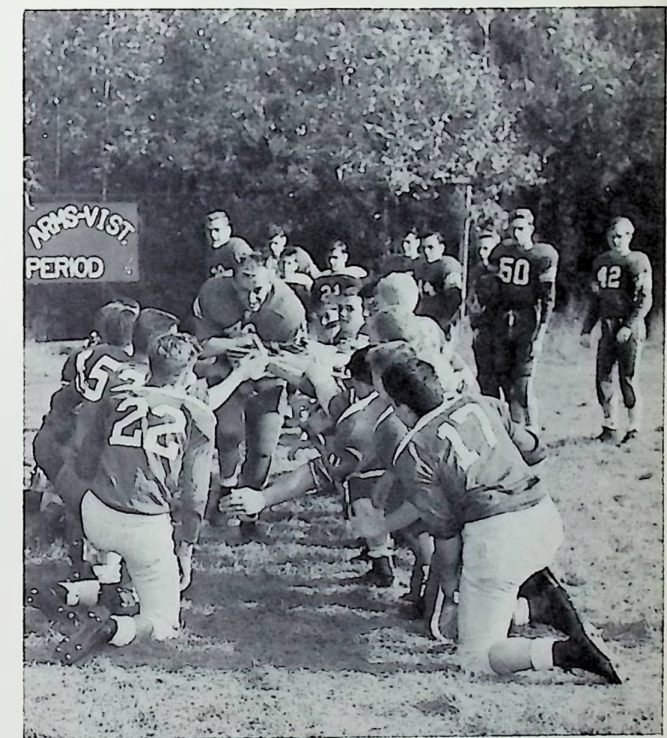


Practice scrimmage



1. to r., first row: D. Smithers, J. Allen, J. Andrews, R. Gammell, G. King, W. Pollard, E. O'Brien, P. Hoyt, J. Fish, R. Fischlein, J. Hoyt; second row: G. Call, S. Hale, D. Beatty, G. Wells, R. Lawless, R. Amnott, E. Reagey, G. Hall, D. Rancourt, Coach MacLeod, Coach Piehl; third row: M. Caron, R. Lively, D. Woods, D. Aitkens, G. Streeter, T. Amnott, R. Mead, J. Palmeri, R. Spencer.

This page sponsored by SAMUEL J. GALBO, M. D.



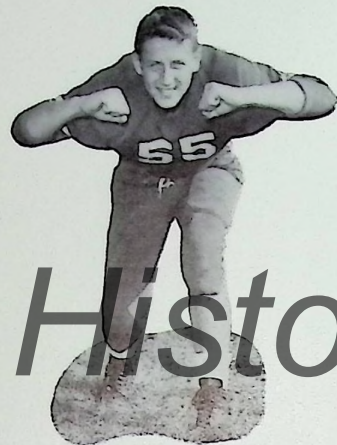
Practice scrimmage

This page sponsored by SAWYER'S NEWS CO.





G. King



E. Reagey



J. Fish

This page sponsored by J. G. POWELL



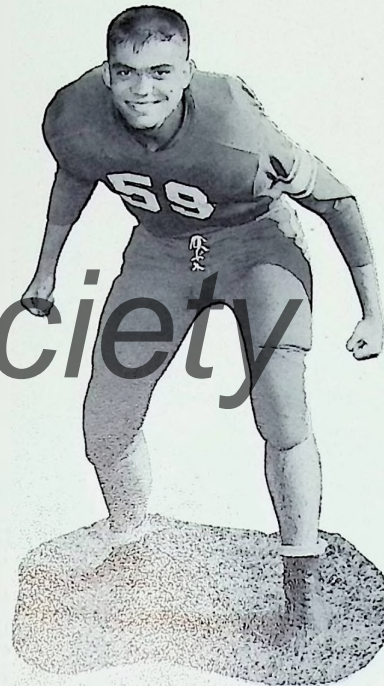
P. Hoyt



J. Allen



H. Andrews



R. Amcott



E. O'Brien

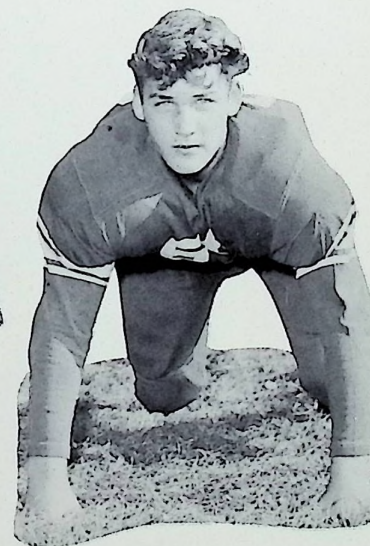


R. Gammell

This page sponsored by KEATING'S COFFEE SHOP



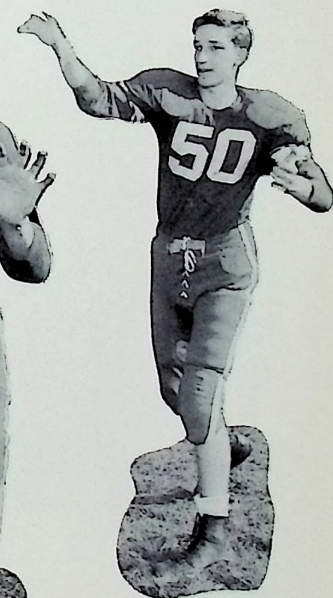
J. Hoyt



G. Hall



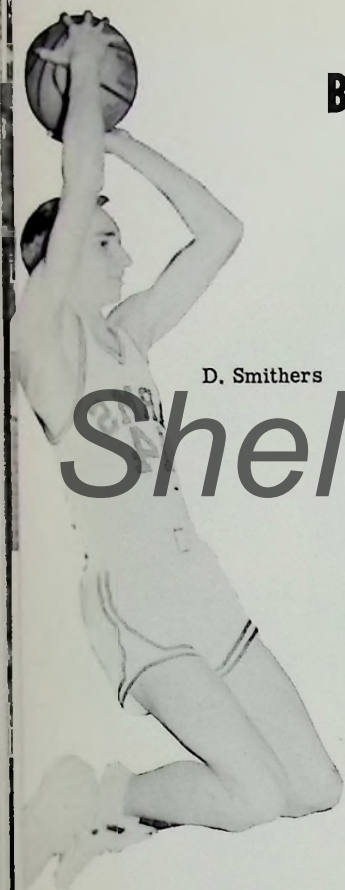
R. Fischlein



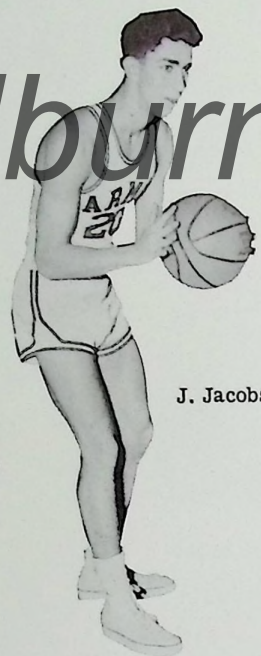
D. Smithers



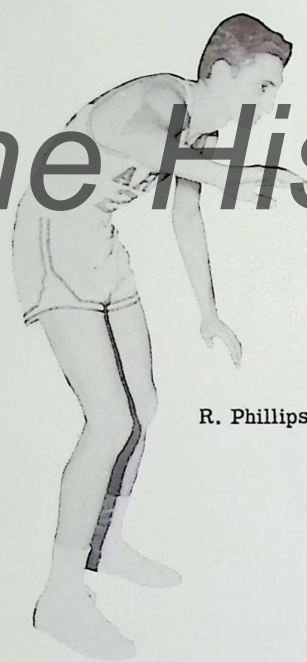
# BASKETBALL



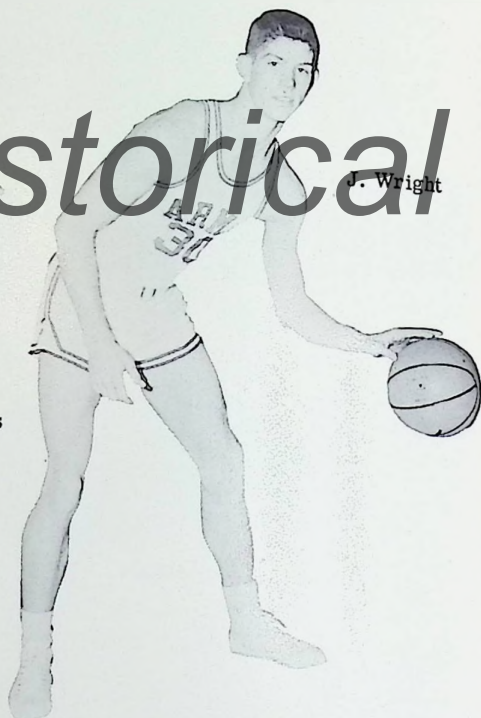
D. Smithers



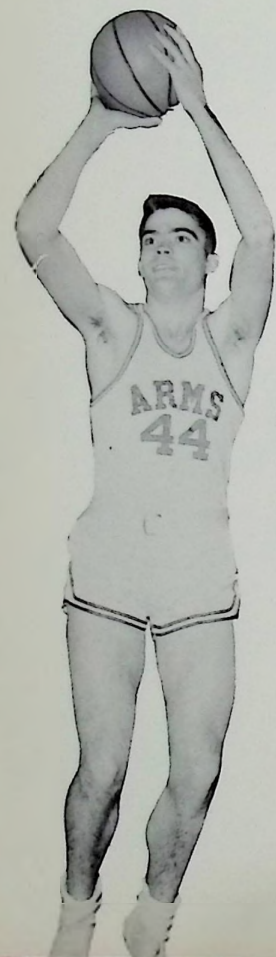
J. Jacobs



R. Phillips



J. Wright

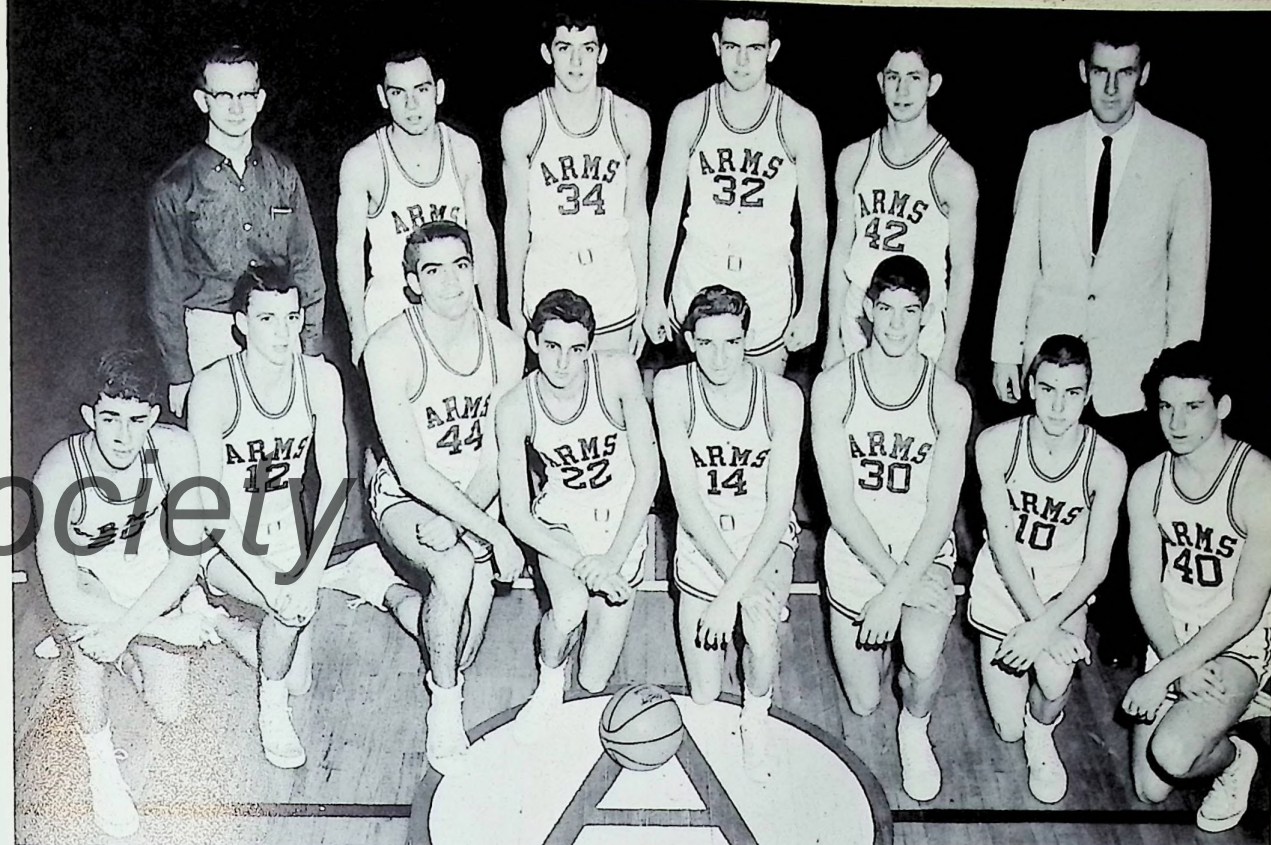


R. Amnott



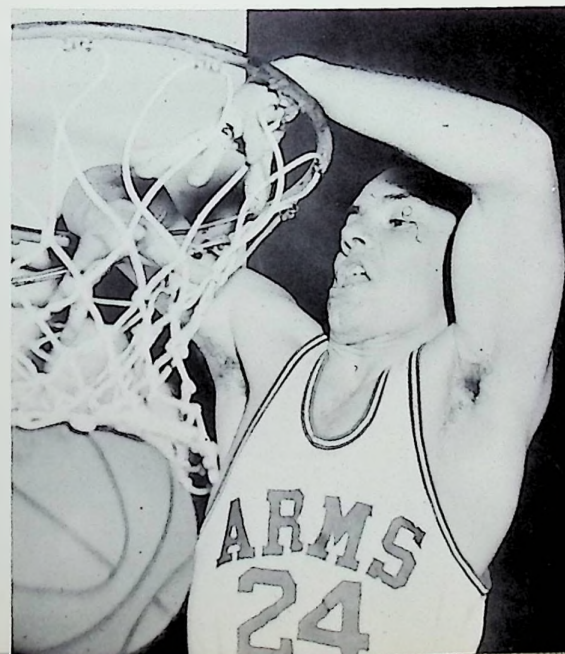
1. to r., first row: L. Barcomb, D. Rancourt, R. Lawless, W. McQuade, S. Peabody, E. Reagey. second row: J. Palmeri, R. Phillips, R. Lively, Coach Piehl, P. Hoyt, R. Cross, G. Alden.

This page sponsored by WAYNE R. HILLMAN



1. to r., First row: J. Jacobs, J. Hoyt, R. Amnott, R. Phillips, D. Smithers, J. Wright, J. Alden, D. Thackeray. Second row: H. Field, W. Pollard, R. Dodge, W. McQuade, P. Hoyt, Coach MacLeod.

Our boys met each opposing team with zestful school spirit and marked determination. Each victory was greeted with joy and praise from fellow students, and after each defeat, the team practiced faithfully in order that future games might result in glory for Arms.



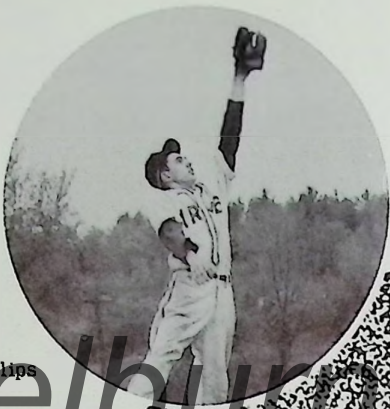
"You Can Make It If You Try"

This page sponsored by  
GEORGE D. MIRICK & SON  
General Insurance Agents  
Shelburne Falls

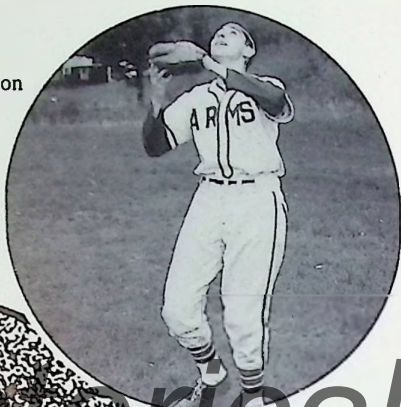
THE RECORD			
Arms	62	Charlemont	40
Arms	66	Charlemont	60
Arms	44	Mahar	59
Arms	39	South Hadley	64
Arms	39	Amherst	54
Arms	57	Hopkins	40
Arms	49	Pioneer	44
Arms	56	Frontier	72
Arms	45	Smith	71
Arms	53	St. Michaels	67
Arms	49	South Hadley	79
Arms	29	Amherst	50
Arms	51	Hopkins	74
Arms	53	Pioneer	34
Arms	43	Frontier	48
Arms	33	Alumni	57



# Shelburne Historical Society



Robert Phillips



James Sturgeon

## SCOREBOARD

* Arms	1	Williamstown	28
* Arms	5	Turners Falls	12
* Arms	0	Williamstown	1
Arms	5	Pioneer	6
* Arms	13	Charlemont	12
Arms	4	Frontier	7
Arms	2	St. Michael	4
Arms	6	Amherst	5
Arms	2	Hopkins	6
Arms	6	Smith Academy	14
Arms	6	Pioneer	3
* Arms	3	Charlemont	7
Arms	1	Frontier	4
Arms	1	St. Michael	3
Arms	0	Amherst	6
Arms	7	Hopkins	13
Arms	3	Smith Academy	5

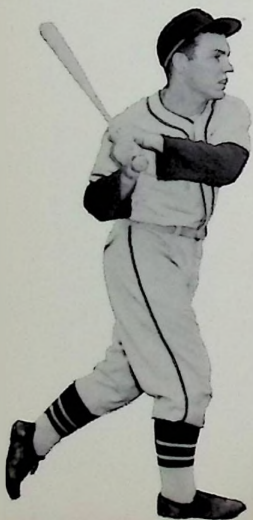
\* Non-league games



Ethan O'Brien



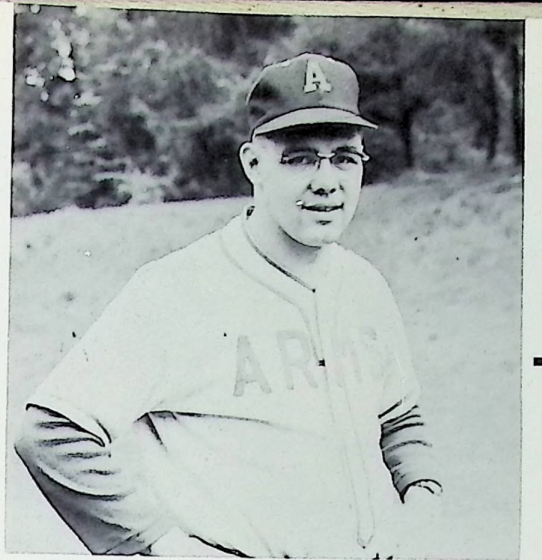
Bruce Rowland



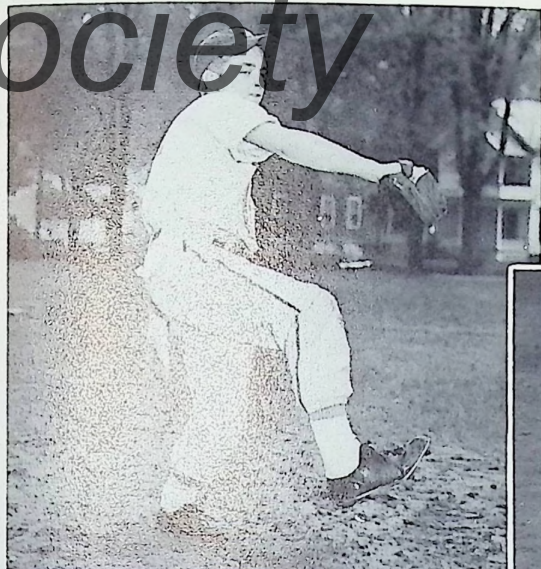
William Pollard

1. to r. first row: R. Fischlein, J. Sturgeon, B. Rowland, R. Lawless, G. Root, W. Pollard; second row: G. Call-manager, R. Lively, R. Phillips, M. Michelak, Coach Piehl, E. O'Brien, W. Thackeray, R. Gates.

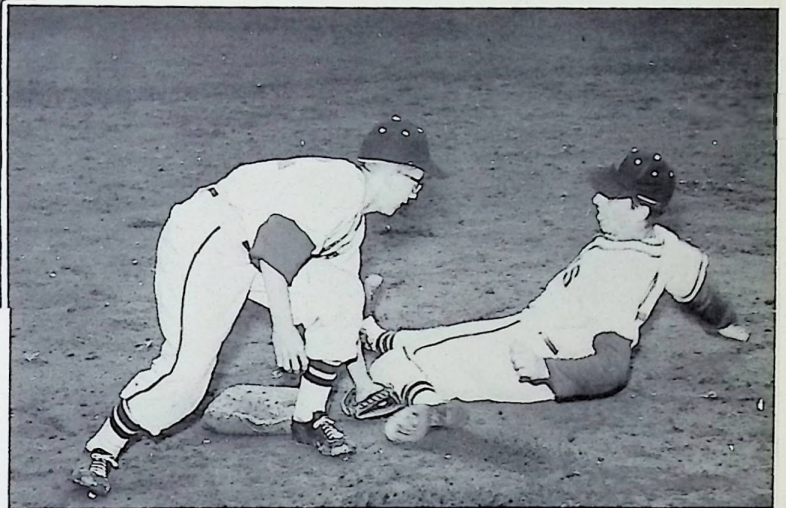
## BASEBALL



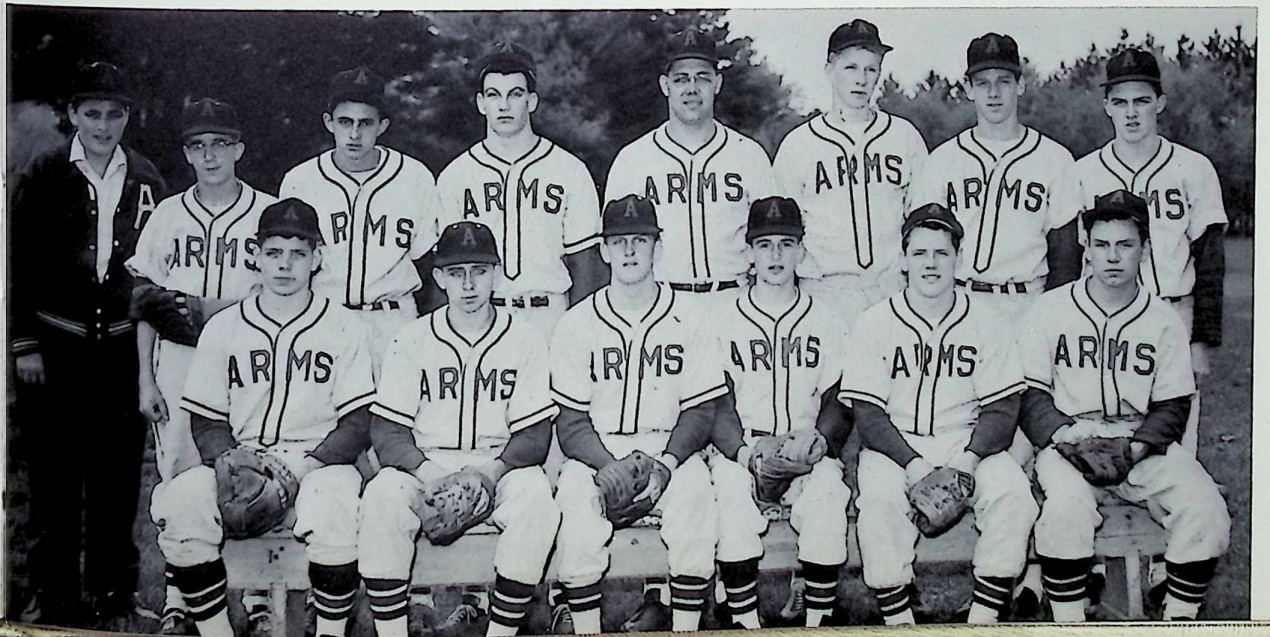
Coach Piehl



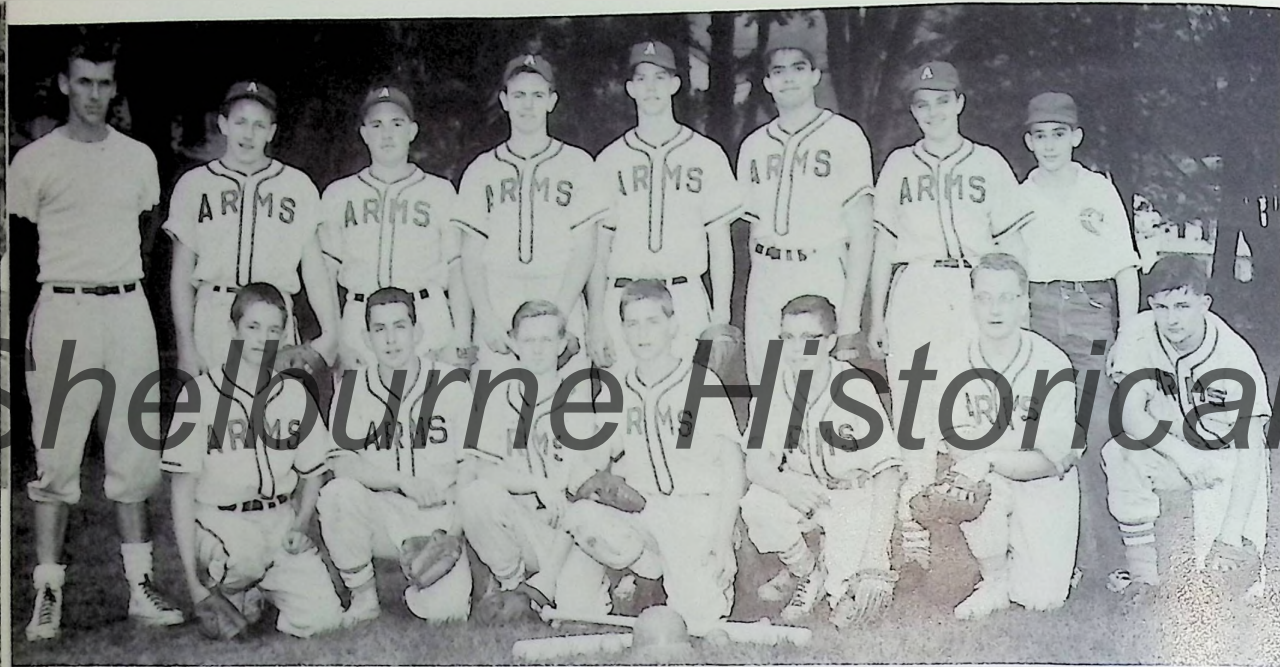
Jon Allen



1. to r. R. Lively, W. Thackeray.



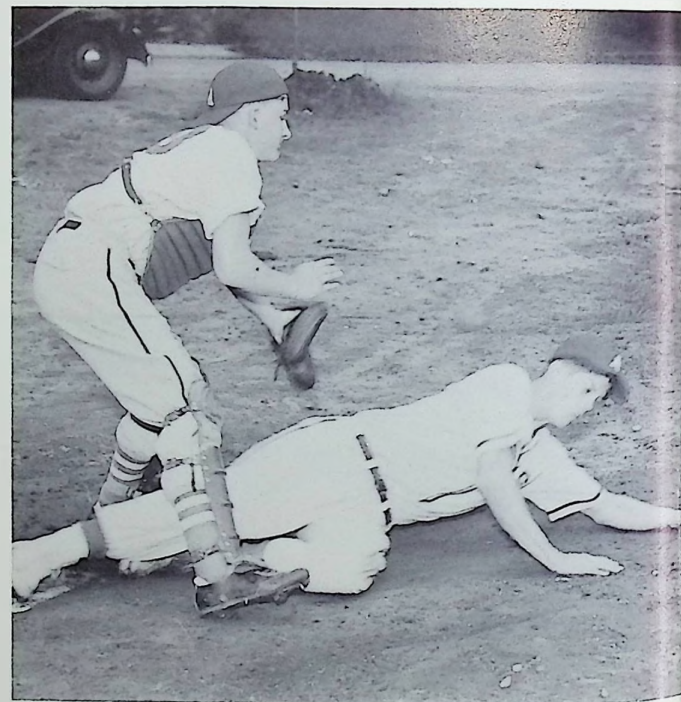
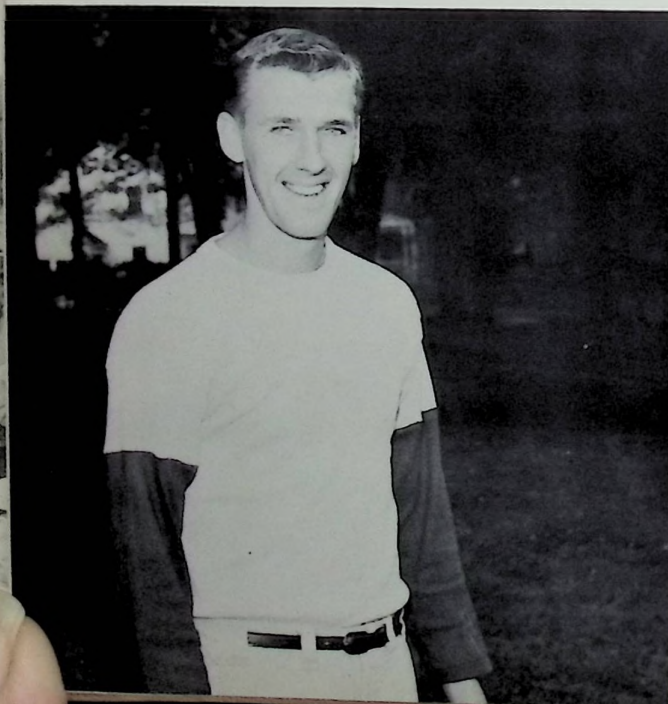




1. to r. first row: F. Goodell, D. Dassatti, D. Beatty, J. Allen, G. Alden, R. Temple, R. Gammell; second row: Coach MacLeod, E. Reagey, C. Tanguay, W. McQuade, J. Wright, R. Amnott, A. Roberts, T. Amnott.

## J.V. BASEBALL

Arms	4	Turners Falls	17
Arms	4	Amherst	20
Arms	0	Turners Falls	13
Arms	4	Pioneer	3
Arms	4	Amherst	15
Arms	7	Pioneer	16
Arms	2	Cavaliers	9
Arms	1	Greenfield	11



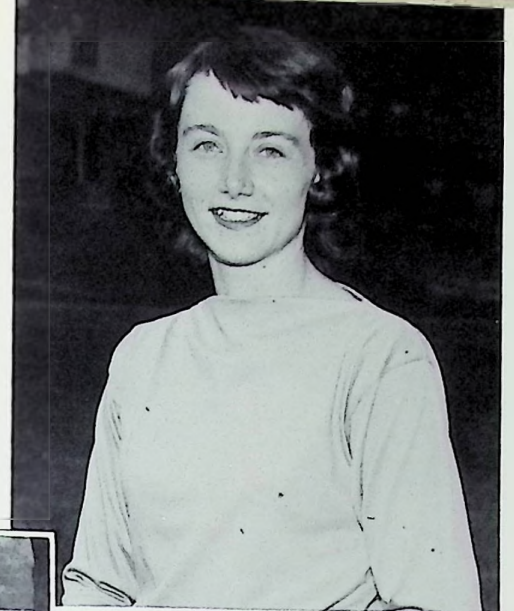
1. to r. R. Gammell, J. Wright.

Coach MacLeod

This page sponsored by KENNETH HENDERSON, Charlemont

## SOFTBALL

Arms	12	Frontier	28
Arms	12	Greenfield	22
Arms	36	Pioneer	7
Arms	8	Greenfield	21
Arms	6	Amherst	17
Arms	15	Charlemont	26
Arms	4	Frontier	9
Arms	12	Charlemont	11
Arms	8	Amherst	13
Arms	9	Pioneer	6



Mrs. Schumaker



Under the capable direction of Mrs. Schumaker the girls' softball team won several games. Since only four seniors were lost by graduation, in 1961 we hope to have an even stronger team. This team will be built around the returning varsity players: Noreen Johnson, Aline Chasles, Linda Garland, Janice Temple, and Marilyn and Janet Roberts.

1. to r. J. Temple, A. Chasles.



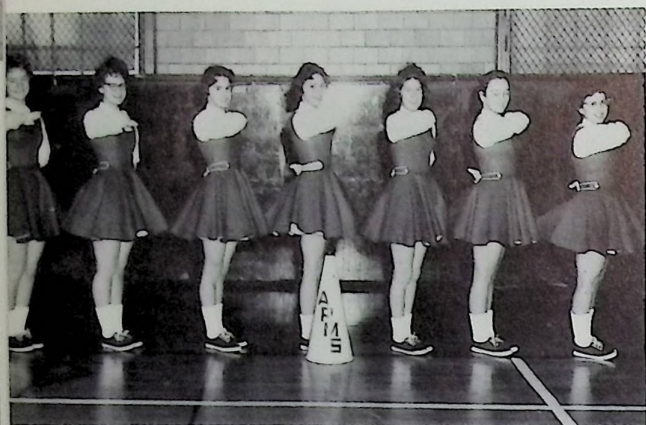
1. to r. first row: F. Long, J. Temple, J. Aiken, A. Chasles, J. Lawless, L. Garland, P. Cutter; second row: A. Stockwell, C. Fish, N. Johnson, M. Roberts, K. Coburn, J. Roberts, D. Field, D. Donelson, D. Aiken, Mrs. Schumaker.

This page sponsored by WAINSHAL FURNITURE CORPORATION, Greenfield



## CHEERLEADERS

Honoring us all at the Frontier Regional Cheering Tournament in 1960, our cheerleaders won the trophy for an outstanding performance. As cheerleaders, their main responsibility is keeping up the morale and school spirit at all our athletic events. Clad in cream-colored, box-pleated skirts and bright red sweaters, these six girls were a welcome addition at all our football games and assemblies. They have been an attraction at our basketball games in their bright red, trimmed with white, uniforms.



Line-Up

This page sponsored by HOWARD A. GOOLEY, JR., Lyonsville and BILL'S RESTAURANT, Federal Street, Greenfield

l. to r.: M. Allen, A. Looney, B. Packard, A. Chasles, C. Hoyt, J. King, J. Stanley.



Greeting Cheer



l. to r., first row: D. Ball, L. Shippee. second row: D. Pierce, S. Herzig, S. Spencer, D. Wells, N. Mitchell.

## TWIRLERS

The twirlers, heading the band on all occasions, radiated the very air of excitement that prevailed at all school gatherings. Under the direction of Diane Ball, drum majorette, and Lane Shippee, head twirler, these girls always displayed commendable timing and co-ordination. A thrilling honor came to Donna Pierce when she won first place in the twirling contest at Franklin County Fair in September.

"Poetry in Motion"



D. Ball





## GIRLS' BASKETBALL

The girls' basketball teams, coached by Mrs. MacLeod, won a series of games of which any school would be proud. Hard work, concentration, and good sportsmanship achieved the fine team-work, which is an essential element of any good basketball team. Arms supporters may well be pleased with the fine records of both teams and may look forward to an even more successful season next year.

### THE SCHEDULE

Arms	46	Sanderson	41
Arms	39	Charlemont	43
Arms	46	Turners	35
Arms	25	Amherst	26
Arms	37	Athol	30
Arms	19	Pioneer	16
Arms	16	Greenfield	36
Arms	24	Turners	48
Arms	18	Sanderson	23
Arms	27	Amherst	15
Arms	14	Greenfield	33
Arms	39	Pioneer	19
Arms	20	Frontier	48

This page sponsored by JOYCE'S MEN SHOP, Shelburne Falls

### SQUAD

1. to r., first row: F. Woods, N. Johnson. second row: L. Mollison, M. Roberts, J. Roberts, S. Miller, C. Booker, S. Bray, B. Bates, D. Mills, M. Litchfield. third row: Mrs. MacLeod, R. Murdock, M. Rice, J. Abbott, C. Smith, A. Cutting, F. Long, C. Gray, L. Garland, S. Carr, C. Hoyt, N. O'Brien, J. Green, G. Traquair, J. Stroheker, J. Temple.



### VARSITY SQUAD

1. to r., first row: L. Mollison, M. Roberts, J. Roberts, S. Miller, F. Woods, N. Johnson, C. Booker, S. Bray, B. Bates, D. Mills, M. Litchfield. second row: Mrs. MacLeod, J. Temple.

This page sponsored by BILL'S BARBER SHOP



## BAND

1. to r., first row: G. Herzig, N. Mitchell, D. Pierce, D. Ball, L. Shippee, D. Wells, S. Spencer. second row: J. Call, D. Aiken, D. Donelson, L. Garland, C. Gray, S. Bray, S. Garland, J. Stroheker, J. Carpenter, E. Desrosseaux, P. Patterson, L. Jarvis. third row: G. Brown, T. Amnott, E. Kelley, R. Cross, R. Mead, P. Crosier, D. Paye, J. Taylor, M. Goodell, D. Quinn, J. Temple, G. Streeter, W. Rosenberg, R. Bittel. fourth row: D. Smithers, J. Wright, H. Field, R. Temple, W. Walker, P. Hoyt, T. Howes, N. Johnson, C. DuBuque, F. Goodell, M. Allen, M. Litchfield, P. Purinton, N. O'Brien, B. Quinn, A. Chasles, K. Mills. fifth row: R. Amnott, J. Vincent, B. Grogan, J. Aiken, C. Booker, M. Garland, R. Hopps, M. Upright, A. Shippee, Mr. Smithers.

This page sponsored by GRIBBON'S MUSIC HOUSE, 112 Main St., Greenfield

## TICKET TAKERS

1. to r., first row: D. Harris, J. Abbott, C. Koncal, A. Goltwaite, R. Herzig. second row: D. Roberts, B. Doneilo, P. Metaxas, J. Miller. third row: S. Brown, B. Gould, C. Gray, R. Murdock. fourth row: Mr. Frude.





# Shelburne Historical Society



1. to r. first row: J. Stroheker, M. Rice, J. Abbott, N. Mitchell, N. Johnson, F. Woods, N. O'Brien, L. Garland, R. Hopps. 1. to r. second row: Mrs. MacLeod, S. Garland, C. DuBuque, C. Booker, S. Coburn, D. McKinnon, J. Temple, M. Goodell.

## FIELD HOCKEY



1. to r. S. Garland, R. Hopps, L. Garland, S. Coburn.



1. to r. N. O'Brien, J. Abbott, D. McKinnon, S. Garland, R. Hopps.

Who were those energetic girls seen out on the campus every afternoon during the fall season? They were the faithful field hockey players who, under the expert coaching of Mrs. MacLeod, persistently practiced for hours to make their team a successful one. Their reward was a winning season with three wins, three losses, and one tie.

1. to r. J. Abbott, S. Garland, N. Johnson, S. Coburn.



ADY  
AMY McHUGH

ERFUL

PARIS

QUERTE MONNOT

S HERE TO ST,

Music by GEORGE GERSHWIN

unicolor musical

PRICE 60¢

American in Paris

To the Music of GEORGE GERSHWIN

Starring GENE KELLY

and Introducing LESLIE CARON

with OSCAR

DEN

SPONSORS



# THE NEW ENGLAND POWER CO. *Shelburne Historical Society*

Every form of Insurance  
for  
Home or Business

**PHILIP A. MILLER**

AN INDEPENDENT AGENT  
SINCE 1920

Shelburne Falls, Massachusetts

For The Best In Clothing  
For  
Men - Young Men and Boys  
Go To

**MICHELMAN CARSON  
CO.**

242 Main Street  
Greenfield, Massachusetts

## **CONWAY NATIONAL BANK**

A New England Counting  
House For Over 100 Years

Member F. D. I. C.

Earle F. Squires, Cashier

Conway, Massachusetts

## **FRANKLIN RESTAURANT**

Harry L. Metaxas  
Proprietor

10 Bridge Street  
Shelburne Falls, Massachusetts



Compliments of

## JARVIS WELDING AND MFG. CO.

Wrought Iron Railings

Raymond Jarvis - FO 7-2340  
Jarvis Welding Co. UN 3-4874  
Turners Falls, Massachusetts

## MARCH'S PHARMACY

When Health Is In The Balance There Is No Compromise For Quality  
Raymond J. Fournier  
Your Modern Self-Service Drug Store  
Telephone MA 5-6750 - Residence MA 5-6664  
Two Doors From Post Office

Headquarters For  
HAZEL BROOK ANTHRACITE - GULF SOLAR HEAT FUEL OIL  
Most Economical - More Heat Per Ton - Cheaper - More Heat Per Gallon  
FULLY AUTOMATIC ELECTRIC FURNACE - MAN STOKERS  
Uniform Heat - Lowest Operation Cost - No Fuss Or Bother  
FORMICA COUNTER TOPS - COLORFUL, UNSTAINABLE, EVERLASTING  
Range Oil & Coke

34 Conway Street  
MA 5-6400



We Give S & H  
Green Stamps

## THE NEW A & A SUPER MARKET

Featuring Martin's Bakery Products

Plenty of Free Parking  
Mohawk Trail Route 2  
Shelburne, Massachusetts

## FISKE FARM

Holsteins and Ayrshires  
Shelburne, Massachusetts

## C.W. WARD, INC.

General Trucking & Excavation

TELEPHONE:  
SHELburne FALLS  
MAdison 5-6530  
MAdison 5-6155

ASHFIELD  
MAYfair 8-4461

Shelburne Falls - Springfield

WEDDING INVITATIONS OUR SPECIALTY

## RICHARDSON PRINTERS

Bardwells Ferry Rd., Shelburne, Mass.  
Tel. MA-5-9652

PRINTING & MIMEOGRAPHING



## BARRETT STUDIO OF PHOTOGRAPHY

Brattleboro, Vermont

Senior Portraits, Bridal Photography

Adults, Teen-agers, and Babies



## EARLE H. ELWELL

Milk Hauling - General Trucking

Telephone PR 3-5065  
280 Wells Street  
Greenfield, Massachusetts

## EASTERN TEXTILE COMPANY

Cotton, Nylon, Silk, and Wool Dress Goods  
Draperies and Upholstery Fabrics

Power Square  
Phone PRescott 3-7516  
Greenfield, Massachusetts

Buy Direct From Factory

## CUSSON MANUFACTURING COMPANY, INC.

Aluminum Combination Windows and Doors  
Jalousie Windows and Doors  
Aluminum Siding

100 North Street Plainfield, Massachusetts  
Telephone CUmmington 2401

Compliments of

## KING & THOMPSON GENERAL STORE AND KING'S PACKAGE STORE

Colrain

Massachusetts

Compliments of

## C.W. HAWKS & CO.

John W. Hoyt, Agent

Insurance Service

Shelburne Falls, Massachusetts



**LAMSON & GOODNOW MANUFACTURING CO.**

Manufacturers of Fine Cutlery  
Shelburne Falls, Massachusetts

Best Wishes  
to the Class of 1961  
from

*The Sweetheart*

Scenic Dining  
Shelburne Falls, Massachusetts

**J.M. BLASSBERG, INC.**

General Trucking  
Telephone MAdison 5-6316  
Shelburne Falls, Massachusetts

**SHELBURNE FALLS SUPER MARKET**

The market of high quality  
low prices & S & H Green Stamps

Shelburne Falls, Massachusetts

**Greenfield Recorder-Gazette**

"Franklin County's Own Newspaper For 169 Years"

All The News Of Your Town  
While It Is News

ON SALE AT  
SAWYER NEWS CO. AND MARCH'S PHARMACY  
OR  
FROM YOUR AREA NEWSPAPER BOY

**SHAW FLORIST**

Flowers - Corsages - Presentation Bouquets  
Sick Room Arrangements  
Plants For Exterior And Interior Decorating

Phone MA 5-6570  
Shelburne Falls, Massachusetts



Compliments of

**WESLEY PHILLIPS, INC.**

Building Contractors  
Telephone MA 5-2167  
Shelburne Falls, Massachusetts

**THE  
BAKER PHARMACY**

Your Rexall Store

Telephone MAdison 5-6324  
52 Bridge Street  
Shelburne Falls, Massachusetts

Compliments  
to all seniors  
from

**RIVERVU  
ROLLER SKATING RINK**

OPEN ALL YEAR ROUND

UN 3-2213

Millers Falls Road, Massachusetts

**COLIN M. FAY**

Trucking - Contracting  
Asphalt Paving  
Telephone  
MAdison 5-6577  
Shelburne, Massachusetts

**BRUFFEE MOTOR SALES**

Sales



Service

Shelburne Falls' Happiest Ford Dealer  
Shelburne Falls, Massachusetts

**MODERN  
LAUNDRY AND CLEANING**

Clean Clothes Last Longer

MAdison 5-6520  
Shelburne Falls, Massachusetts

**YORK KENNELS**

A. K. C. BEAGLES  
A. K. C. COLLIES  
A. K. C. GERMAN SHEPHERDS

Tel. MA 5-6195  
South Shelburne Road

Charles and Mitch York  
Shelburne, Massachusetts



Compliments of

## MOHAWK ORCHARDS

Shelburne, Massachusetts

Compliments of

## WARE FUEL COMPANY, INC.

Plumbing - Heating - Fuels

Joseph R. Amstein, President  
MAdison 5-6470  
Shelburne Falls, Massachusetts

## AL'S SHOE STORE

Shoes and Shoe Repairing

Ball Band Rubber Footwear  
Boy Scout Shoes

State Street  
Shelburne Falls, Massachusetts

## NEGUS & TAYLOR, INC.

MONUMENTS  
MARKERS - LETTERING

PRescott 3-9552

Greenfield, Massachusetts

## SHELBURNE FALLS GARAGE, INC.

J. M. Blassberg, President



"Nearest to Perfection a Low-Priced Car Ever Came!"  
"New look of distinction for 1961"  
"The Greatest Show on Worth"

Phone MA 5-6316  
Shelburne Falls, Massachusetts

## THE FARM FAMILY LIFE INSURANCE CO.

offers to high school students,  
especially graduates, several fine endowment policies. Our specialty - 20  
payment endowment at 65. Only 20 years to pay in and you get back, at age  
65, much more than you pay in, plus dividends. Double indemnity added at  
15, your beneficiary receives double face amount of policy if you are killed  
accidentally.

See your local Farm Bureau insurance agent  
LEWIS W. GOODNOW  
Tel. MAdison 5-2144  
Shelburne, Massachusetts



**THE VILLAGE COUNTRY STORE**

Groceries and General Merchandise

Telephone EDgewood 9-4700  
Rowe, Massachusetts

*Compliments of*

**THE  
LAKE ASPHALT  
&  
PETROLEUM COMPANY**

Greenfield, Massachusetts

**SWEET'S EXPRESS**

General Trucking  
Agent for Farm Bureau  
Feed and Farm Supplies  
Dealer in Lee Limestone  
bag, bulk, or farm spread

*Compliments of*

**PAUL A. NELSON**

"The Class Ring Man"

P. O. Box 367  
Enfield, Conn.

Representing  
Herff Jones Co.

*Compliments of*

**LAPIERRE'S, INC.**

14 Bridge Street  
Shelburne Falls

48 Federal Street  
Greenfield

Massachusetts

You can be sure -----if it's Westinghouse.



Compliments of

KIWANIS CLUB, INC.

of  
Shelburne Falls



"Freedom is up to you."



Best Wishes  
To The Class Of 1961

ROCKDALE STORE

Turners Falls, Massachusetts



## GREENFIELD CO-OPERATIVE BANK

SERIAL SHARES  
Monthly Savings Plan From  
\$1.00 to \$100.00 Per Month In A Joint Account - Current Dividend - 3 3/4%  
SAVINGS ACCOUNTS  
Deposits and Withdrawals in Irregular  
Amounts - Current Dividend 3 1/4%  
Real Estate Mortgages - Home Repair Loans  
68 Federal Street  
Greenfield, Massachusetts

## WESTFIELD BOX AND LUMBER CO., INC.

P. O. Box 125  
Shelburne Falls, Massachusetts

Compliments of

## NORTHAMPTON CO-OPERATIVE LIVESTOCK AUCTION

Murray H. Fiske, Manager

Compliments of

## E.S. KENDRICK

Electrical Contractor

MA 5-2280  
Shelburne Falls, Massachusetts

## MAYHEW STEEL PRODUCTS, INC.

Since 1856

QUALITY TOOLS FOR MORE THAN A CENTURY

## BARRETT AND BAKER

Typewriter Sales and Service  
Booksellers, Stationers, Office Outfitters  
School suppliers

306-310 Main Street  
Greenfield, Massachusetts



## RAY'S MARKET

Easy and Ample Parking  
Free Deliveries Daily  
for  
Telephone Orders  
Colrain Tel. MA 5-9471  
Shattuckville

Compliments of

## THE FRATERNAL ORDER OF EAGLES



Shelburne Falls, Massachusetts

Compliments of

## THE SHELBURNE FALLS NATIONAL BANK



## BERNARD R. BUTLER

Radio and TV Service

Colrain Telephone NA 4-3631

## WHAI AND WHAI-FM

Shelburne Falls News

8:15 - 8:30  
MONDAY - SATURDAY

Compliments of

Philip Tedesco, Jr. - Henry A. Johnson, Jr.

## THE JOHNSON FUNERAL HOME



**DR. JAMES H. BOLTON**

Orthodontist

Phone: PR 2-0764  
78 Federal Street  
Greenfield, Massachusetts

**S. & J. SERVICE STATION**

Heating Oils

MAdison 5-6745  
State Street

Shelburne Falls, Massachusetts

**HUB GRILL, INC.**

PHONE 3-9009

**GRILL ROOM • DINING ROOM • AMBER ROOM**

*Catering for All Occasions*

*Conference and Dining Facilities*

GREENFIELD, MASSACHUSETTS

**CORNER CUPBOARD SNACK SHOP**

Main Street  
Greenfield, Massachusetts

Movies Are Better Than Ever  
Always A Good Show  
At Your

**MEMORIAL AND COMMUNITY  
DRIVE-IN THEATRES**

Shelburne Falls, Massachusetts

In Greenfield It's

**WILSON'S**

Franklin County's Great Family Store

- - Since 1882 - -





Compliments of

**A.R. SANDRI, INC.**



Cities Service Distributor  
Heating Oils

We give S & H Green Stamps  
191 Cleveland Street  
Greenfield, Massachusetts

## BECKER JUNIOR COLLEGE

of  
Business Administration And Secretarial Science  
A CAREER SCHOOL OF BUSINESS  
Associate In Science Degree  
PROGRAMS OF STUDY

Accounting      Medical Secretarial  
Business Administration      Retail Merchandising  
Executive Secretarial      Management Training  
Transfer Privileges With Many Leading Colleges  
Co-Educational - Dormitories - Athletics - Placement Service  
Catalog On Request

Worcester, Massachusetts

1896

1961

## NORTHAMPTON COMMERCIAL COLLEGE

College Grade Courses in  
Business Administration - Secretarial Science  
FEATURES which distinguish N. C. C. are: degree transfer privileges,  
coeducational, strong faculty, guidance, activities, lifetime placement,  
dormitories for men and women.  
Address Director of Admissions for further information  
Northampton, Massachusetts

## SHELBURNE FALLS BOWLING LANES

Candlepin Bowling Is Fun For All Ages

Telephone MA 5-6179

Best Wishes

from

## YANKEE ATOMIC ELECTRIC

Rowe, Massachusetts

Compliments of

## R.S. HATHAWAY

Native Lumber

Telephone  
Shelburne Falls  
MAdison 5-2339  
North Adams  
MOhawk 3-5984  
Ashfield, Massachusetts



Compliments of

**THE KENDALL COMPANY**

Griswoldville & Lyonsville Plants

**PARK-N-SHOP**

formerly Carpenter's

Greenfield, Massachusetts

Compliments of

**PEGGY'S BEAUTY SHOPPE**

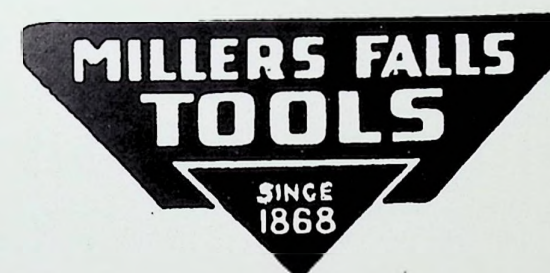
Corner Of Pierce & Davis Streets

PR 3-9793  
Greenfield, Massachusetts

We congratulate you upon the completion of your High School course. Your diploma is a symbol of a wise investment in permanent values - - values that will be a sound foundation for continued growth, wherever you go, whatever you do.

Sometime in the future you will have a need for tools - - for your job, or your hobby, or home repairs. When this time comes, look for the Millers Falls Trademark - - the symbol of permanency of tools. Since 1868 we have constantly searched for better materials, designs, and finishes to give lifetime utility to the tools we manufacture. Given reasonable care, these tools will "season" in use, taking on a character all your own and will be lifetime friends known and proven by the work they perform.

For your choice of a lifetime - - choose Millers Falls.



Millers Falls Tools  
Since 1868  
GREENFIELD, MASSACHUSETTS



EARN WHILE YOU LEARN  
IN APPRENTICE TRAINING

AT

## PITTSFIELD GENERAL ELECTRIC

THE GENERAL ELECTRIC APPRENTICE PROGRAM  
OFFERS TO QUALIFIED HIGH SCHOOL GRADUATES,  
FOUR YEAR ON-THE-JOB TRAINING AND ACADEMIC  
EDUCATION FOR A CAREER AS:

ENGINEERING TECHNICIAN

TOOLMAKER

DRAFTSMAN



For Good Health

## SWEET LIFE QUALITY FOODS

BEST WISHES TO ALL THE UNDERCLASSMEN

from the Class of '61

## PATRONS

THE NIXON COMPANY  
Nixon Building  
Indian Orchard, Massachusetts

Compliments of  
JOHN E. BOND  
Rowe, Massachusetts

APEX ORCHARD  
Shelburne  
Massachusetts

Compliments of  
THE SPRUCES  
Williamstown, Massachusetts

CAR ONE  
Mohawk Trail  
Charlemont, Massachusetts

Compliments of  
NORM SERVICE STATION  
Cummington, Massachusetts

ASHFIELD HOTEL REST HOME  
24 hour care, excellent food  
Tel. MAYfair 8-3252

INDIAN PLAZA  
Mohawk Trail  
Charlemont, Massachusetts

Compliments of  
DR. C. E. STREETER  
Charlemont, Massachusetts

Compliments of  
SHELDEGREN FARM  
Registered Guernseys

DUCK POND RESTAURANT  
Shelburne  
Massachusetts

SPORTHAUS  
"Chuck" Warren  
Greenfield, Massachusetts

MARTIN'S BAKERY  
The Best in Baked Food  
Greenfield, Massachusetts

HAROLD B. ALLEN, INC.  
409 Federal Street  
Greenfield, Massachusetts

JUREK BROTHERS, INC.  
53 School Street  
Greenfield, Massachusetts

ART'S ATLANTIC  
Federal & Smith Streets  
Greenfield, Massachusetts

TENNEY FARMS DAIRY  
Greenfield  
Massachusetts

THE RED ROSE RESTAURANT &  
MOTOR COURT, on the Mohawk Trail  
Shelburne Falls, Massachusetts

D. A. LANOUE, ELECTRICIAN  
CHARLEMONT OIL COMPANY  
Charlemont, Massachusetts

SNOW'S MILK & ICE CREAM CO.  
80 School Street  
Greenfield, Massachusetts

STREETER'S GAS STATION  
Foster Streeter, Prop.  
Colrain, Massachusetts

ASHFIELD MOTOR SALES  
Tel. MAYfair 8-3252  
Ashfield, Massachusetts

MARK L. PURINTON, M. D.  
Buckland  
Massachusetts

FRANCIS W. LaPIERRE  
Fretted Instrument Instructor  
Shelburne Falls, Massachusetts



OXBOW MOTEL  
East Charlemont  
Massachusetts

LEWIS E. RUSH, D.M.D.  
Shelburne Falls  
Massachusetts

MOHAWK ESSO  
George S. Lindsey, Prop.  
Greenfield, Massachusetts

TED HERZIG  
Colrain  
Massachusetts

W. S. CASSIDY, INC.  
Greenfield  
Massachusetts

MOHAWK PARK  
Charlemont  
Massachusetts

PECOR'S CITIES SERVICE  
Charlemont  
Massachusetts

MOM'S SNACK BAR  
Charlemont  
Massachusetts

OLD FORT RESTAURANT  
Charlemont  
Massachusetts

SINGLEY'S FURNITURE  
Bridge Street  
Shelburne Falls, Massachusetts

DONALD T. HILLIER  
Shelburne Falls  
Massachusetts

PETRIN'S SERVICE STATION  
107 Main Street  
Greenfield, Massachusetts

SHELburne FALLS SAVINGS BANK  
Shelburne Falls  
Massachusetts

CLIMAX CANDY COMPANY  
Wholesale Confectionery  
North Adams, Massachusetts

FRANKLIN SAVINGS INSTITUTION  
Greenfield  
Massachusetts

YANKEE KITCHEN RESTAURANT  
State Street  
Shelburne Falls, Massachusetts

H. S. SWAN CO, INC.  
Shelburne Falls  
Massachusetts

COPLEY'S TEXACO  
State Street  
Shelburne Falls, Massachusetts

A. & W. ROOT BEER  
High and Silver Streets  
Greenfield, Massachusetts

HELEN'S BEAUTY SALON  
Shelburne Falls  
Massachusetts

CALL'S GARAGE  
Colrain  
Massachusetts

HALLETT'S APPLE ORCHARD  
Elmer Hallett  
Shelburne Falls, Massachusetts

EDMOND D. SHIPPEE  
Jewelry - Gifts - Sporting Goods  
Shelburne Falls, Massachusetts

SHELburne GROCETERIA  
Joseph Tognarelli, Prop.  
Shelburne Falls, Massachusetts

THE duMONT CORPORATION  
289 Monroe Avenue  
Greenfield, Massachusetts

WALTER'S BEAUTY SALON  
178 Main Street  
Greenfield, Massachusetts

BEN FRANKLIN STORE  
H. F. Brown, Prop.  
Shelburne Falls, Massachusetts

S. K. NELSON  
So. Deerfield, Branch Office  
Shelburne Falls, Massachusetts

McCLOUD'S GUN SHOP  
NEWELL HARDWARE  
Shelburne Falls, Massachusetts

CARL'S TEA ROOM and RESTAURANT  
Greenfield  
Massachusetts

RALPH E. BLACKMER  
Insurance Service  
Shelburne Falls, Massachusetts

J. B. TEMPLE, M. D.  
Main Street  
Shelburne Falls, Massachusetts

EDWARD C. GOODELL, D. M. D.  
12 Church Street  
Shelburne Falls, Massachusetts

H. E. OXMAN, M. D.  
Bridge Street  
Shelburne Falls, Massachusetts

F. H. AMSDEN CO.  
Dry Goods-Gifts-Greeting Cards  
Shelburne Falls, Massachusetts

MELODY MEN  
Shelburne Falls  
Massachusetts

DAVIS LINOLEUM SHOP  
Greenfield  
Massachusetts

HAROLD TOY, O. D.  
Shelburne Falls  
Massachusetts

CONWAY SAVINGS BANK  
Conway  
Massachusetts

WHAT NOT SHOP  
Mrs. Belle A. Willey, Prop.  
Charlemont, Massachusetts

TURNER'S GARAGE &  
MOHAWK GUN SHOP  
Charlemont, Massachusetts

THE KINSMORE  
Hazel Goodnow, Prop.  
Shelburne Falls, Massachusetts

FRANKLIN COUNTY LUMBER CO.  
Greenfield  
Massachusetts

PARKS' CITIES SERVICE  
50 State Street  
Shelburne Falls, Massachusetts

HALLIGAN and WARNER  
137 Bridge Street  
Shelburne Falls, Massachusetts

WASTE PRINTING HOUSE  
5 Cross Street  
Shelburne Falls, Massachusetts

CHARM BEAUTY SALON  
Bridge Street  
Shelburne Falls, Massachusetts

LaBELLE'S NURSING HOME  
3 High Street  
Shelburne Falls, Massachusetts

GERALD R. WALL  
Shelburne Falls  
Massachusetts

SCOTT'S ESSO STATION  
Lyonsville  
Massachusetts

Compliments of  
ANTIQUÉ AUTO MUSEUM & GIFT SHOP  
Charlemont, Massachusetts

COTT QUALITY BEVERAGE  
Marshall K. Fairbanks - Distributor  
Colrain, Massachusetts







